

2019 Model Year Standard Specification



Principal Dimensions

Length overall (inc. pulpit):
50'8" (15.46m)

Length overall (exc. pulpit):
49'2" (15.00m)

Beam (inc. gunwale):
14'2" (4.31m)

Number of berths:
4 - 7

Draught:
3'10" (1.18m) unloaded

Height above waterline
(inc. arch & nav. light mast):
18'2" (5.55m)

Transport height:
16' (4.87m)

Dry weight (approx.):
13.28 imp. tons / 14.88 US tons
(13,500kg)

Fuel capacity:
288 gallons / 346 US gallons
(1,309 litres)

Water capacity (inc. calorifier):
106 gallons / 127 US gallons
(482 litres)

**Engines
& Performance**

2 x Volvo Penta IPS600 D6-435, diesel
(435mhp each):
30 knots

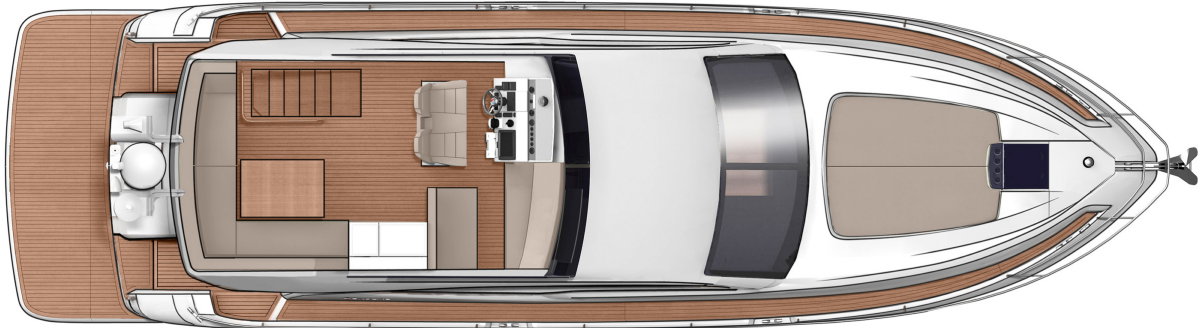
Type Approval:
B

2 x Volvo Penta IPS700 D8-550, diesel
(550mhp each):
32 knots

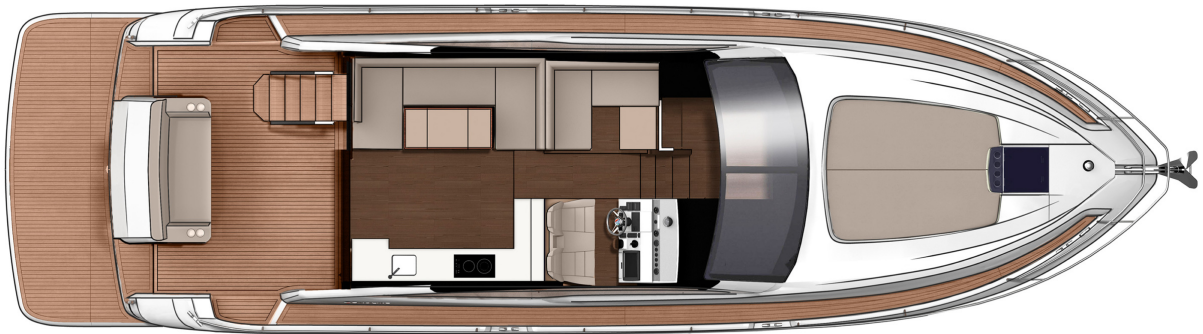
Max Capacity:
16 persons

Deck Plans

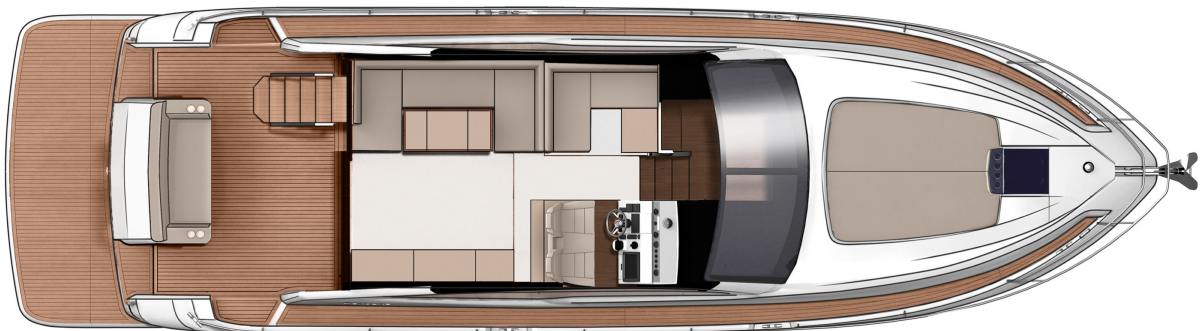
Flybridge



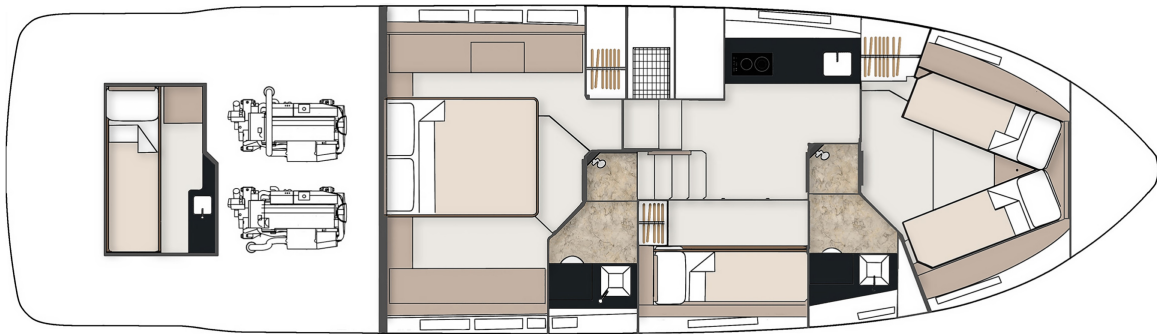
Main Deck Galley-up



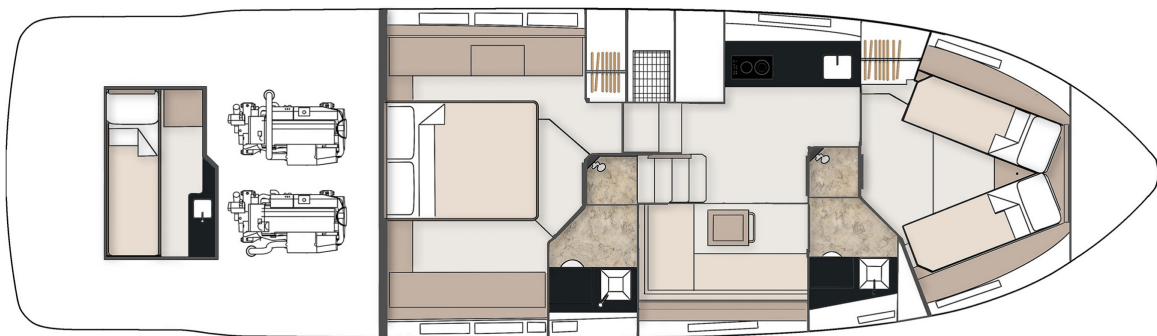
Main Deck



Lower Deck 2 Cabin (with single Crew Cabin option)



Lower Deck 3 Cabin (with single Crew Cabin option)



Deck

- Anchor chain locker
- Anchor winch controls
- Anchor winch (electric)
- Calibrated anchor chain
- Ensign & staff
- Fender set
- Full set of IMCO navigation lights
- Hot & cold water transom shower
- Moulded non-slip deck surface
- Foredeck recess for coachroof cushions
- Riding light
- Rubbing strake
- Self-stowing Delta® anchor
- Stainless steel bow fairleads
- Stainless steel bow, spring & stern cleats
- Stainless steel handrails
- Stainless steel pulpit
- Stainless steel stemhead roller
- Stainless steel transom wing cleats
- Swim ladder to bathing platform
- Teak-laid bathing platform
- Toughened glass curved windscreen
- Twin horns
- Twin transom gates between cockpit & bathing platform
- Water filler
- Windscreen washers
- Windscreen wipers

Flybridge & Second Helm Position

- 12V heavy duty weather proof socket
- Access hatch
- Acrylic dodgers
- Adjustable/tilt steering wheel
- Bilge pump warning lights & audible alarms
- Twin helm seats
- Bow thruster controls
- Companion seating to helm
- Cup holders
- Echosounder & speedometer/distance log repeater(s) with sea water temperature read out
- Electronic single-lever throttle & gear controls for port & starboard engines
- Fire extinguisher
- Flybridge bar unit with refrigerator, sink & waste bin
- Forward seating with infill cushion
- Garmin GMi 20 digital multi-function instrument system with colour display
- GRP radar mast
- GRP table with teak border
- Helm position indicator
- High speed magnetic compass
- Instrument covers
- IPS joystick
- Moulded non-slip deck surface
- Powered steering
- Remote anchor winch controls
- Remote control searchlight with controls at both helm stations
- Repeat engine bay fire extinguisher controls
- Repeat flybridge engine instrumentation, controls & electronics
- Sunbed with storage beneath
- Teak laid flybridge steps
- Trim tab controls
- Upholstered seating area with table, convertible to cushioned sunbathing area
- VHF radio incorporating intercom
- Wind-deflecting screen with grab rail

Main Helm Position

- 12V socket
- Bilge pump switches with integral operating warning lights & audible alarms
- Twin helm seats
- Controls for engine bay fire extinguisher system
- Drinks holders
- Electronic single-lever throttle & gear controls for port & starboard engines
- Fuel gauges
- Full engine instrumentation including; tachometers, temperature gauges, audible alarms & engine hour meters
- Garmin GMI 20 digital multi-function instrument system with colour display
- Garmin VHF marine radio
- Helm position indicator
- High-speed magnetic compass
- IPS joystick
- Remote anchor winch controls
- Searchlight with remote control at helm
- Waterproof switches for navigation & riding lights, windscreen wipers & engine bay extractor fans

Electrical Systems

- All 240V, 24V & 12V circuits (where applicable) protected by circuit breakers with main electrical load control panel
- Electrical sockets
- Heavy duty circuit breakers
- Isolating switches to all batteries

	<p>12 Volt</p> <p>Batteries – 2 x heavy duty batteries for domestic services</p> <p>1 x heavy duty battery for exclusive port engine starting</p> <p>1 x heavy duty battery for exclusive starboard engine starting</p> <p>Emergency battery coupling system permits starboard engine to start port engine if domestic batteries accidentally discharged</p>	<p>240 Volt</p> <p>Polarity check & earth leakage protection system</p> <p>Power points throughout the boat fed from shore power or generator</p> <p>Regulated battery charger</p> <p>Shore power supply</p>
Cockpit	<p>12V heavy duty weatherproof socket</p> <p>Bathing platform lights</p> <p>Boat hook</p> <p>Cockpit seating</p> <p>Drinks holders</p> <p>Engine bay access hatch</p> <p>Fender stowage</p> <p>Gas locker</p>	<p>Lazarette under cockpit seat</p> <p>Life raft stowage</p> <p>Manual bilge pumps</p> <p>Mooring warps</p> <p>Step for side deck access</p> <p>Teak laid cockpit</p> <p>Warp lockers</p>
Interior Décor	<p>Choice of interior finishes from the Amalfi, Capri, Hamptons or St Tropez interior styling ranges selected by the Fairline Yachts Design Studio</p>	
Hullform & Construction	<p>Antifouling protection to hull</p> <p>Design, layout & detailing by the Fairline Yachts Design Studio</p> <p>Full length moulded spray deflectors</p> <p>Integrally moulded engine bearers</p>	<p>Polyurethane foam cores throughout deck for high-strength & thermal insulation</p> <p>Transverse and longitudinal strengthening stringers throughout hull</p>
Main Saloon	<p>Companion seating opposite helm</p> <p>Companionway steps with handrail to galley & accommodation</p> <p>Dining table</p> <p>LED ceiling lights</p> <p>LCD TV 32" with Fusion RA205 & wireless connectivity</p> <p>Manual opening windows</p>	<p>Side board with storage for bottles & glasses</p> <p>Sofa</p> <p>Stainless steel door to cockpit with integral blind system</p> <p>Storage locker to helm seat base</p> <p>Stowage locker under seating</p>

Galley

Control panel for 12V/240V domestic electrical circuits	Integrated waste bin
Crockery stowage	Lacquered cupboard doors
Extractor fan	LED ceiling lights
Fire extinguisher	Lockers (overhead)
Foundations® work surface with covers	Sink with hot & cold mixer tap
Hob, oven & grill	Tall fridge/freezer with automatic 12V/240V change-over
Hull window	Work surface lights

Lower Saloon

Access to day head	LED ceiling lights
Aerial & connections for television	22" LCD television
Cocktail table converts to dining table	Lockers (overhead)
Companionway timber steps with handrail	Radio & iPod dock with 2 speakers
First aid kit	Sofa
Hull window	Stowage locker under dinette seating
	Underfloor stowage locker

Accommodation

Master Cabin

Access to en suite	LED ceiling lights
Bedside tables	Opening portholes
Chest of drawers	Reading lights
Full length double bed	Vanity unit
Full length mirror	Wardrobe

Master Cabin En Suite

220V/240V shaving point	Full set of bathroom fittings
Automatic shower tray pump-out system	Full standing-height shower with integral shower tray & adaptable shower head
Electric silent-flush freshwater toilet	Hand basin with hot & cold water
Extractor fan	Mirror
Solid surface vanity unit locker & basin with hot & cold pressurised water	Opening porthole
	Stowage locker

Forward Cabin

Access to shower/WC compartment	Lockers (overhead)
Bedside tables	Low level drawers
Double bed converting to V-berth	Opening portholes
Full length mirror	Reading lights
Hatch to foredeck	Trinket locker
Headboard shelf unit	Wardrobe
LED ceiling lights	

Guest En Suite

220V/240V shaving point
Automatic shower tray pump-out system
Electric silent-flush freshwater toilet
Extractor fan
Solid surface vanity unit locker & basin with hot & cold pressurised water

Full set of bathroom fittings
Full standing-height shower with integral shower tray & adaptable shower head
Hand basin with hot & cold water
Mirror
Opening porthole
Stowage locker

Third Cabin

Optional, in lieu of lower saloon

Full length mirror
Full length twin bunk beds
LED ceiling lights

Opening porthole
Reading lights
Wardrobe

Crew Cabin

Optional

Single berth
Sink

Storage locker
Toilet

Engines & Sterngear

Automatic bilge pumps for engine bay with a manual 'on' override
Automatic engine bay fire extinguisher system
Electric engine bay fans
Electric trim tabs with cathodic protection

Engine bay lights
Engine room soundproofing
High capacity emergency manual bilge pump system with changeover valves
Sea cocks on all inlets/outlets below waterline

Fuel System

Changeover valve system to permit each engine to draw fuel from & return fuel to either tank
Emergency fuel shut-off valves
High capacity water separators & fuel filters

Individual fillers & vents to port & starboard
Twin fuel tanks

Freshwater System

Automatic, pressurised supply
Calorifier hot water system

Water tank

USA Specifications

In addition to or in lieu of those listed above

Voltage - 2 x 110V (220V) 60Hz

Whilst every effort is made to keep all sales literature up to date, it should not be regarded as an infallible statement of current specifications & does not constitute an offer for the sale of any particular boat. We continually seek to improve the specification & design of our boats, so alterations & upgrades to specifications take place continually.

Appointed dealers are not agents of Fairline Yachts Ltd & are not authorised to commit Fairline Yachts Ltd by any express or implied undertaking or representation.

Performance Figures: Power quoted in our literature for diesel inboard engines is crankshaft output.

Performance Estimates: Performance estimates are given in good faith, but are in no way guaranteed for any particular model. Dirt on the bottom of the boat, damage to the propellers, engine tuning, external water & air temperatures & the weight of crew, fuel & water carried can all adversely affect performance. For those & other reasons we can give no performance guarantees