

2020 Model Year Standard Specification



Principal Dimensions

Length overall (incl. pulpit):
67'8" (20.62m)

Height above waterline:
20'1" (6.13m)

Beam (incl. gunwale):
17'2" (5.23m)

Transport height:
20'4" (6.24m)

Berths:
6 - 10

Fuel capacity:
1029 gallons / 1236 US gallons
(4680 litres)

Draught:
5'1" (1.57m) unloaded

Water capacity (incl. calorifier):
237 gallons / 285 US gallons (1080
litres)

Dry weight (approx.):
39.37 tonnes / 44 US tons (40,000kg)

Engines & Performance

Twin Caterpillar C18-1150 shaft drive,
diesel (1,150mhp each)

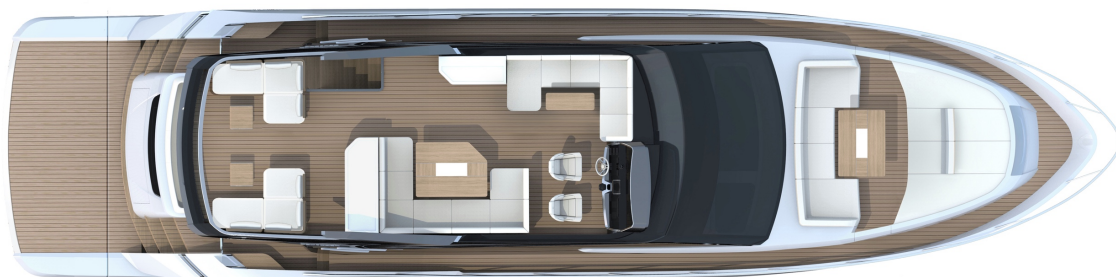
Twin MAN V8 1200 shaft drive, diesel
(1,200mhp each)

Type Approval:
B

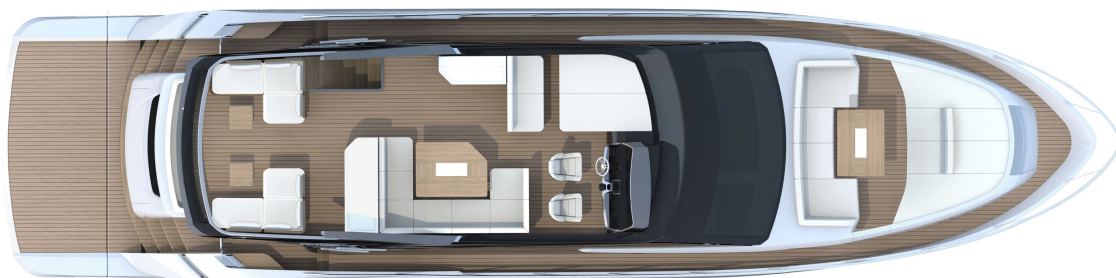
Max Capacity:
16 persons

Deck Plans

Flybridge with forward seating



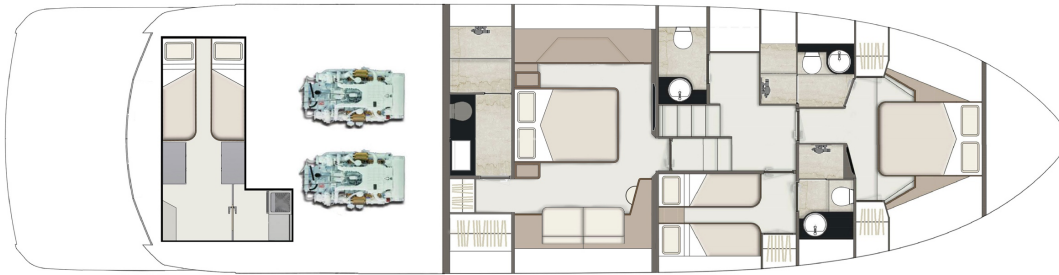
Flybridge with forward sunbed



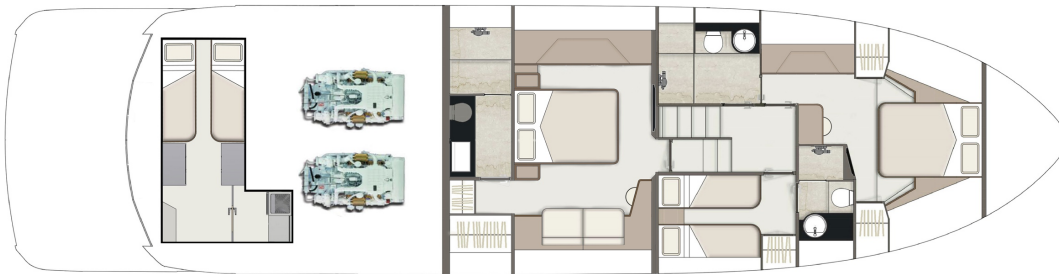
Main Deck



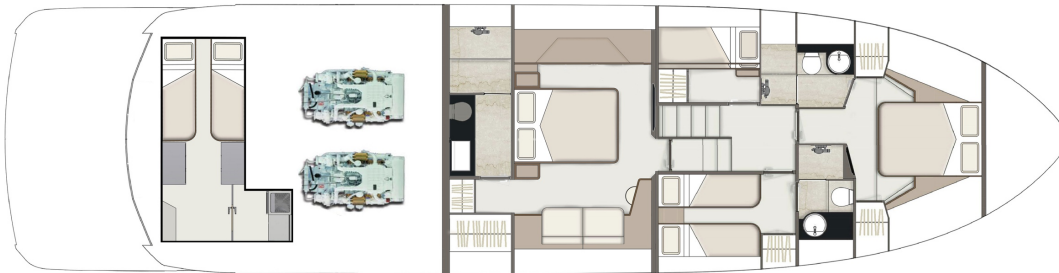
Lower Deck 3 Cabin & Day Head



Lower Deck 3 Cabin with Extended VIP



Lower Deck 4 Cabin



Deck

Anchor chain locker	Moulded non-slip deck surface
Anchor winch	Remote control search light
Anchor winch controls	Riding light
Bathing platform ladder	Rigid swim ladder to bathing platform
Black mesh windscreen covers	Self-stowing Delta® galvanised anchor (40kg)
Calibrated galvanised anchor chain (12mm, 80m)	Stainless steel bow, spring & stern cleats
Deck wash outlets	Stainless steel bow fairleads
Ensign & staff	Stainless steel handrails
Fender set	Stainless steel pulpit
Foredeck cup holders	Teak laid bathing platform
Foredeck glazing	Transom gate from cockpit to hi/lo bathing platform
Foredeck seating & sunbeds	Twin horns
Foredeck stowage lockers	Water filler
Fuel fillers	Windscreen washers
Full set of IMCO navigation lights	Windscreen wipers
Hot & cold-water transom shower	
Manual bilge pump	

Lower Helm

USB socket	f-Drive multifunction display
Adjustable/tilt steering wheel	Raymarine 16" display (x1)
Bilge pump switches with integral operating warning lights & audible alarms	Raymarine Type 1 autopilot
Bow thruster controls	Raymarine P70RS control head unit
Controls for engine bay fire extinguisher system	Raymarine RAY260E VHF marine radio
Drinks holders	Opening window
Electronic single-lever throttle & gear controls for port & starboard engines	Powered steering
Glass Bridge incorporating full engine instrumentation; tachometers, fuel gauges, temperature gauges, audible alarms & rudder position indicator	Red night-light illumination
High speed magnetic compass	Remote anchor winch controls
	Searchlight controls
	Switches for navigation & riding lights, windscreen wipers & engine room extractor fans
	Trim tab controls
	Twin independent helm & co-pilot seats

Flybridge & Second Helm Position

12V heavy duty weatherproof socket	Fusion® amplifier remote display & speakers
Adjustable/tilt steering wheel	High speed magnetic compass
Adjustable bolstered helm seating	Moulded non-slip deck surface
Bilge pump switches with integral operating warning lights & audible alarms	Powered steering
Bow thruster controls	Radar arch/mast
Companion seating to helm	Remote anchor winch controls
Aft facing seating & tables	Remote control searchlight
Dedicated dining seating with dining table	Repeat flybridge engine instrumentation, controls & electronics
Drinks holders	Stainless steel handrails
Electronic single lever throttle & gear controls for port & starboard engines	Storage unit housing waste bin
Flybridge access hatch	Teak laid oversize flybridge steps
Flybridge bar with refrigerator, icemaker, sink & electric griddle	Teak table
Flybridge covers	Trim tab controls
	USB socket
	VHF radio incorporating intercom
	Wind-deflecting screen with grab rail

Foredeck

Recessed seating area with low level lighting	Drinks holders
Seating and sunbed cushions with luft track fitting	Tonneau cover
	USB socket

Electrical Systems

230 - 240V 50Hz
All 240V, 24V & 12V circuits (where applicable) protected by circuit breakers with main electrical load control panel
Dimmer switches
Fire shutdown system
Heavy duty circuit breakers
Isolating switches to all batteries
Onan® 21.5 kW generator
12 Volt
Voltage dropper from domestic batteries

Electrical Systems

Continued

24 Volt

Batteries - 2 x heavy duty batteries exclusively for port engine starting

Batteries - 2 x heavy duty batteries exclusively for starboard engine starting

Batteries - 4 x heavy duty batteries wired in parallel supply for domestic services & port engine starting

Emergency battery coupling system permits each engine to start from opposite battery bank

240 Volt

Isolation summation transformer

Polarity check & earth leakage protection system

Power points throughout the yacht (fed from shore power or generator)

Regulated 80amp charger for domestic batteries

Shore power supply

Spare circuit breakers for optional equipment

Cockpit

12V heavy duty weatherproof socket

Access hatch to engine room

Access hatch to lazarette or optional crew cabin

Bathing platform lights

Blue LED lighting to cockpit

Boat hook

Deck level lighting

Drinks holders

Fender stowage

Flybridge steps

Flybridge access hatch

Fusion® RA50 radio & remote control

Life raft stowage

Manual bilge pumps

Mooring warps & stowage

Teak laid floor throughout self-draining cockpit

USB socket

Interior Décor

Choice of interior finishes from the Amalfi, Capri, Hamptons or St Tropez interior styling ranges selected by the Fairline Yachts Design Studio

Hullform & Construction

Antifouling protection to hull

Bow thruster

Deep 'V' hull

Design, layout & detailing by AM Yacht Design and the Fairline Yachts Design Studio

Naval architecture by Vripack

Extended sound-proofing between engine room and accommodation

Feature windows with opening portholes

Moulded spray deflectors

Hull/deck joint bolted & bonded

Integrally moulded engine bearers

Isophthalic gel coat backed by isophthalic resin-rich powder-bound glass mat

Polyurethane foam cores throughout deck for strength & thermal insulation

Resin infused, cored hull & liner with hand laid deck & components

White hull

Saloon

50" Samsung® LCD TV
Harman Kardon® 2.1 with wireless connectivity
Harman Kardon® wall mounted speakers
Drinks cabinets with 8 lead crystal tumblers

LED ceiling lights
Random oak flooring
Sliding patio door to cockpit
Venetian blinds
V-leg fixed dining table

Galley

Avonite® work surface
Chopping board to sink infill
Crockery stowage
Electric induction hob
Extractor fan
China dinner service & cutlery set
Fire extinguisher

First aid kit
Fridge Freezer
Integrated waste bin
LED ceiling lights
Random teak floor
Stowage cupboards & drawers
Sink with hot & cold mixer tap

Lobby

Access to electrical control panel
Access to day head

Lighting to stair risers
Storage unit

Accommodation

Forward Cabin

Bedside tables	LED ceiling lights
Double bed with storage drawers	Reading lights
Escape hatch to foredeck with blind	Sprung mattress
Feature windows with single opening porthole	Upholstered bedhead
Full length mirror	Venetian blinds
	Wardrobes with leather inlayed doors

Forward En Suite

Avonite® vanity unit with locker & basin with hot & cold pressurised water	Full standing height shower with hinged door
Avonite® floor	Mirror
Electric silent-flush freshwater toilet	Shower tray automatic pump-out system
Extractor fan	Stowage locker
Feature window with opening porthole	Towel rail
Full set of bathroom fittings	Towel set
	Venetian blind

Master Cabin

40" Samsung® LCD TV	Harman Kardon® wall mounted speakers
Bedside tables	LED ceiling lights
King size bed with interior sprung mattress & storage drawers	Reading lights
Feature windows with opening portholes	Upholstered bedhead
Full-height standing headroom	Vanity unit/bureau with chair
Fusion® audio system with wireless connectivity	Venetian blinds
	Wardrobes with mirrored doors

Master En Suite

Avonite® vanity unit with locker & twin basins with hot & cold pressurised water	LED ceiling lights
Avonite® floor	Mirror
Electric silent-flush freshwater toilet	Overhead lockers
Extractor fan	Random teak floor
Feature window with single opening porthole	Shower tray automatic pump-out system
Full set of bathroom fittings	Towel rail
Full standing height shower with seat & glass hinged door	Towel set
	Venetian blind

Starboard Guest Cabin

Bedside table
Drawers under bed
Feature window with single opening porthole
Full length berths (x 2) with high-comfort interior sprung mattresses
Full length mirror

Hanging locker with mirror
LED ceiling lights
Reading lights
Venetian blind
Wardrobe with leather inlay door

Starboard Guest Cabin En Suite

Avonite® vanity unit with locker & basin with hot & cold pressurised water
Avonite® floor
Electric silent-flush freshwater toilet
Extractor fan
Feature window with opening porthole
Full set of bathroom fittings

Full standing height shower with hinged door
Mirror
Shower tray automatic pump-out system
Stowage locker
Towel rail
Towel set
Venetian blind

Port Guest Cabin

Optional in lieu of day head & lobby storage

Full length bunks (x 2) with high-comfort interior sprung mattresses
Full length mirror
LED ceiling lights

Opening porthole
Reading lights
Venetian blind
Wardrobe

Day Head

Avonite® vanity unit with locker & basin with hot & cold pressurised water
Electric silent-flush freshwater toilet
Feature window with opening porthole

Full set of bathroom fittings
LED ceiling lights
Mirror
Random oak floor
Towel rail
Towel set

Aft Utility Room

LED ceiling lights
Power points

Timber flooring
Wet hanging area

Aft Crew Cabin

Optional

220V/240V shaving point

Access to en-suite bathroom

Aft crew cabin access from platform with stairs

Air conditioning

Opening porthole with fly screen

Electric silent-flush freshwater toilet

Fire extinguisher

Full standing height shower with hinged floor tray

LED ceiling lights

Mirror

One fold-up berth & one fixed berth with drawers below

Power points

Random oak floor

Shower proof curtains

Sink with hot & cold mixer tap

Engines

& Sterngear

Access through cockpit hatch

Automatic bilge pumps for forward bilge, engine bay & rudder bay with manual 'on' override

Automatic engine bay fire extinguisher system with warnings at both helms

Dripless shaft seals

Electric engine bay fans

Electric trim tabs with cathodic protection

Engine bay lights

Engine room soundproofing

Exhaust overheat warning system

High capacity emergency manual bilge pump system

Manganese bronze 'P' brackets

Manganese bronze propellers contra-rotating

Sea cocks on all inlets/outlets below waterline

Water cooled engine exhausts with through hull outlets shafts

Fuel System

Changeover valve system to permit each engine to draw fuel from & return fuel to either tank

Emergency fuel shut off valves

High capacity water separators & fuel filters

Twin alloy fuel tanks

Freshwater System

Automatic, pressurised supply 80 litre calorifier hot water system

Water tank

Black Waste

Holding tank (400 litres) with electronic macerator pump-out

Air Conditioning

Chilled water high capacity system

Screen demist vents linked to air conditioning

Commissioning

Full Yacht Division commissioning, pre-delivery inspection & handover at the Fairline Marine Park, Hythe, UK.

USA Specifications

In addition to or in lieu of those listed above

Voltage - 2 x 110V (220V) 60Hz

Whilst every effort is made to keep all sales literature up to date, it should not be regarded as an infallible statement of current specifications & does not constitute an offer for the sale of any particular boat. We continually seek to improve the specification & design of our boats, so alterations & upgrades to specifications take place continually.

Appointed dealers are not agents of Fairline Yachts Ltd & are not authorised to commit Fairline Yachts Ltd by any express or implied undertaking or representation.

Performance Figures: Power quoted in our literature for diesel inboard engines is crankshaft output.

Performance Estimates: Performance estimates are given in good faith but are in no way guaranteed for any particular model. Dirt on the bottom of the boat, damage to the propellers, engine tuning, external water & air temperatures & the weight of crew, fuel & water carried can all adversely affect performance. For those & other reasons we can give no performance guarantees