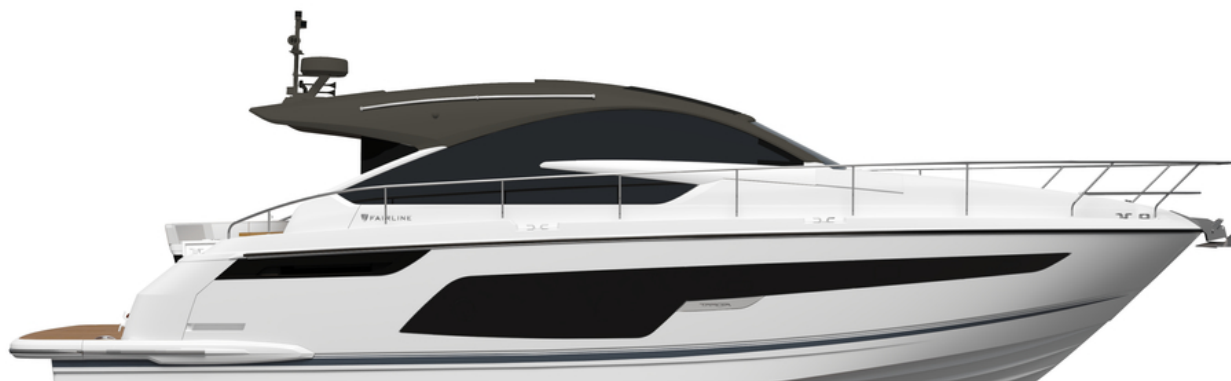


2020 Model Year Standard Specification



Principal Dimensions

Length overall (incl. pulpit)
submersible platform:

51'4" (15.64m)

Length overall (excl. pulpit)
submersible platform:

50'8" (15.44m)

Beam (incl. gunwale):

14'2" (4.32m)

Draught:

3'10" (1.17m) unloaded

Berths:

4 - 7

Height above waterline

(incl. arch & nav. light mast):

15'1" (4.6m)

Transport height:

15'10" (4.83m)

Dry weight (approx.):

13.28 tonnes / 14.88 US tons (13,500kg)

Fuel capacity:

288 gallons / 346 US gallons
(1,309 litres)

Water capacity (incl. calorifier):

106 gallons / 127 US gallons
(482 litres)

Engines & Performance

2 x Volvo Penta IPS600 D6-440, diesel
(880hp): 30 knots

2 x Volvo Penta IPS650 D6-480, diesel
(960hp): 31 knots (est.max)

2 x Volvo Penta IPS700 D8-550, diesel
(1100hp): 32 knots

Type approval:

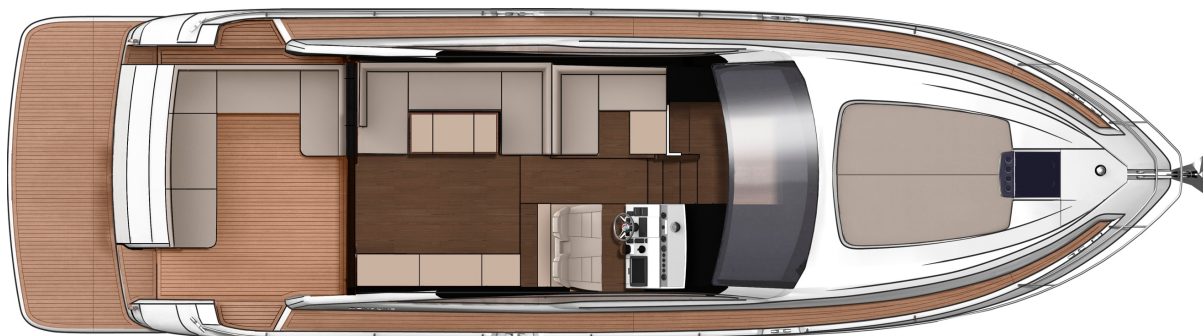
B

Max. persons capacity:

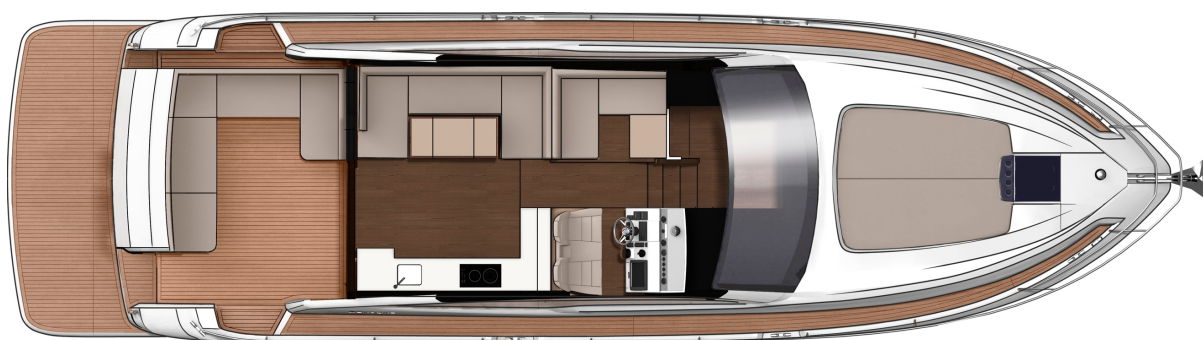
16

Deck Plans

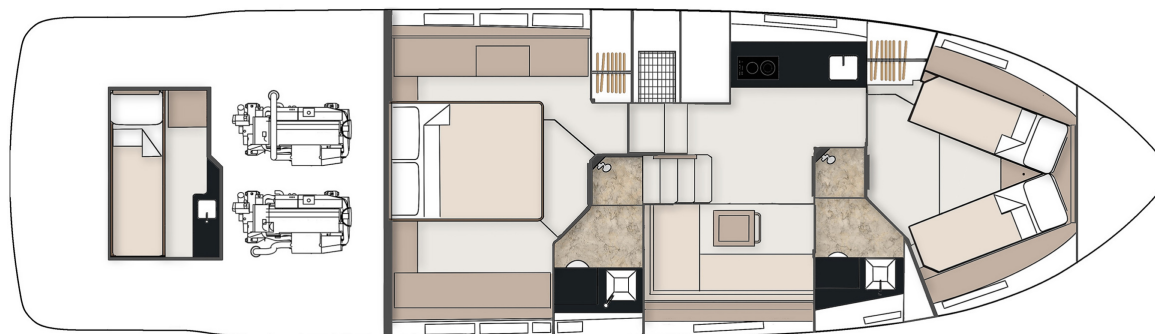
Main Deck



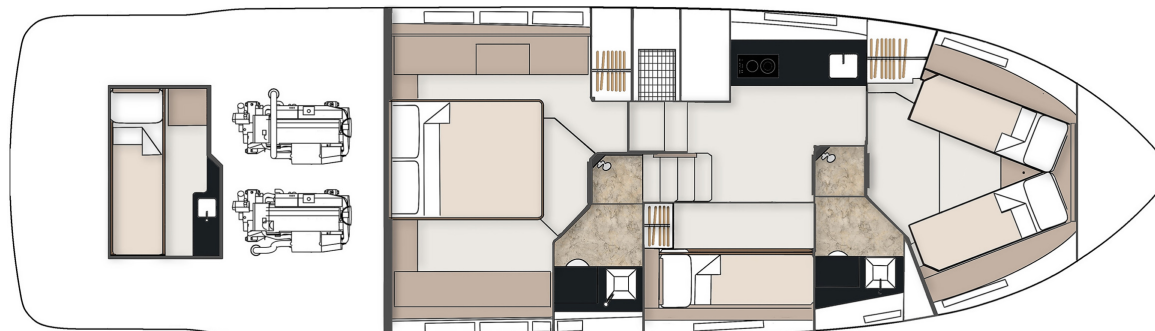
Main Deck Galley Up (option)



Lower Deck 2 Cabin (with single Crew Cabin option)



Lower Deck 3 Cabin (with single Crew Cabin option)



Deck

Anchor chain locker	Stainless steel handrails
Anchor winch controls	Stainless steel pulpit
Anchor winch (electric)	Stainless steel stemhead roller
Calibrated anchor chain	Stainless steel transom wing cleats
Ensign & staff	Swim ladder to bathing platform
Fender set	Teak-laid bathing platform (with option of submersible platform)
Full set of IMCO navigation lights	Toughened glass curved windscreen
Hot & cold water transom shower	Transom gate from cockpit to integral bathing platform
Moulded non-slip deck surface	Twin horns
Recessed self-draining area on foredeck for coach-roof cushions	Water filler
Riding light	Windscreen washers
Rubbing strake	Windscreen wipers
Self-stowing Delta® anchor	
Stainless steel bow fairlead	
Stainless steel bow, spring & stern cleats	

Helm Position

12V socket	Garmin GMi 20 digital multi-function instrument system with colour display
Bilge pump switches with integral operating warning lights & audible alarms	Garmin VHF marine radio
Twin helm seats	Helm position indicator
Controls for engine bay fire extinguisher system	High-speed magnetic compass
Drinks holders	IPS joystick
Electronic single-lever throttle & gear controls for port & starboard engines	Remote anchor winch controls
Fuel gauges	Searchlight with remote control at helm
Full engine instrumentation including; tachometers, temperature gauges, audible alarms & engine hour meters	Single piece windscreen
	Waterproof switches for navigation & riding lights, windscreen wipers & engine bay extractor fans

Electrical Systems

All 240V, 24V & 12V circuits (where applicable) protected by circuit breakers with main electrical load control panel

Electrical sockets

Heavy duty circuit breakers

Isolating switches to all batteries

12 Volt

Batteries – 2 x heavy duty batteries for domestic services

1 x heavy duty battery for exclusive port engine starting

1 x heavy duty battery for exclusive starboard engine starting

Emergency battery coupling system permits starboard engine to start port engine if domestic batteries accidentally discharged

240 Volt

Polarity check & earth leakage protection system

Power points throughout the boat fed from shore power or generator

Regulated battery charger

Shore power supply

Cockpit

12V heavy duty weatherproof socket

Bathing platform lights

Boat hook

Central dining area with table

Drinks holders

Engine bay access hatch

Fender stowage

Gas locker

Lazarette under cockpit seat

Life raft stowage

Manual bilge pumps

Mooring warps

Step for side deck access

Teak laid cockpit

Warp lockers

Interior Décor

Choice of interior finishes from the Amalfi, Capri, Hamptons or St Tropez interior styling ranges selected by the Fairline Yachts Design Studio

Hullform & Construction

Antifouling protection to hull

Design, layout & detailing by the Fairline Yachts Design Studio

Full length moulded spray deflectors

Hardtop with electric sliding roof

Integrally moulded engine bearers

Polyurethane foam cores throughout deck for strength & thermal insulation

Transverse & longitudinal strengthening stringers throughout hull

Main Saloon

Companion seating opposite helm

Companionway steps with handrail to galley & accommodation

Dining table

LED ceiling lights

32" LCD television

Manual opening windows

Radio with wireless connectivity

Side board with storage for bottles & glasses

Sofa

Stainless steel door to cockpit with integral blind system

Storage locker to helm seat base

Galley

Control panel for 12V/240V domestic electrical circuits	Integrated waste bin
Crockery stowage	Lacquered cupboard doors
Extractor fan	LED ceiling lights
Fire extinguisher	Lockers (overhead)
Foundations® work surface with covers	Sink with hot & cold mixer tap
Hob, oven & grill	Tall fridge/freezer with automatic 12V/240V change-over
Hull window	Work surface lights

Lower Saloon

Access to day head	LED ceiling lights
Aerial & connections for television	22" LCD television
Cocktail table converts to dining table	Lockers (overhead)
Companionway timber steps with handrail	Radio & iPod dock with 2 speakers
First aid kit	Sofa
Hull window	Stowage locker under dinette seating
	Underfloor stowage locker

Master Cabin

Access to en suite	LED ceiling lights
Bedside tables	Opening portholes
Chest of drawers	Reading lights
Full length double bed	Vanity unit
Full length mirror	Wardrobe

Master En Suite

Automatic shower tray pump-out system	Full standing-height shower with integral shower tray & adaptable shower head
Electric silent-flush freshwater toilet	Hand basin with hot & cold water
Extractor fan	Mirror
Solid surface vanity unit locker & basin with hot & cold pressurised water	Opening porthole
Full set of bathroom fittings	Stowage locker

Forward Cabin

Access to shower/WC compartment	Lockers (overhead)
Bedside tables	Low level drawers
Double bed converting to V-berth	Opening portholes
Full length mirror	Reading lights
Hatch to foredeck	Trinket locker
Headboard shelf unit	Wardrobe
LED ceiling lights	

Guest En Suite

Automatic shower tray pump-out system	Full standing-height shower with integral shower tray & adaptable shower head
Electric silent-flush freshwater toilet	Hand basin with hot & cold water
Extractor fan	Mirror
Solid surface vanity unit locker & basin with hot & cold pressurised water	Opening porthole
Full set of bathroom fittings	Stowage locker

Third Cabin

Optional, in lieu of lower saloon

Full length mirror	Opening porthole
Full length twin bunk beds	Reading lights
LED ceiling lights	Wardrobe

Crew Cabin

Optional

Single berth	Storage locker
Sink	Toilet

Engines & Sterngear

Automatic bilge pumps for engine bay with a manual 'on' override	Engine bay lights
Automatic engine bay fire extinguisher system	Engine room soundproofing
Electric engine bay fans	High capacity emergency manual bilge pump system with changeover valves
Electric trim tabs with cathodic protection	Sea cocks on all inlets/outlets below waterline

Fuel System

Changeover valve system to permit each engine to draw fuel from & return fuel to either tank	Individual fillers & vents to port & starboard
Emergency fuel shut-off valves	Twin fuel tanks
High capacity water separators & fuel filters	

Freshwater System

Automatic, pressurised supply	Calorifier hot water system
	Water tank

USA Specifications

In addition to or in lieu of those listed above

Voltage - 2 x 110V (220V) 60Hz

Whilst every effort is made to keep all sales literature up to date, it should not be regarded as an infallible statement of current specifications & does not constitute an offer for the sale of any particular boat. We continually seek to improve the specification & design of our boats, so alterations & upgrades to specifications take place continually.

Appointed dealers are not agents of Fairline Yachts Ltd & are not authorised to commit Fairline Yachts Ltd by any express or implied undertaking or representation.

Performance Figures: Power quoted in our literature for diesel inboard engines is crankshaft output.

Performance Estimates: Performance estimates are given in good faith but are in no way guaranteed for any particular model. Dirt on the bottom of the boat, damage to the propellers, engine tuning, external water & air temperatures & the weight of crew, fuel & water carried can all adversely affect performance. For those & other reasons we can give no performance guarantees