



TARGA 45 OPEN

We're going places. Join us.



POWERFUL, VERSATILE AND LUXURIOUS. THE ESSENCE OF FAIRLINE, CAPTURED.

Renowned superyacht designer Alberto Mancini has designed the Targa 45 OPEN using his unmistakable signature style. And it is something you will see and feel, above or below deck.

Svelte, sophisticated lines evoking that unmistakable Riviera-glamour, married with flawless engineering and unbridled performance.

Step aboard, and all that style and luxury persists, with a spacious cockpit... exactly what you would expect from a craft built for daily escapades to dazzling private beaches or secluded coves.

BEAUTIFUL LINES STUNNING FEATURES

Despite its low profile, the Targa 45 OPEN more than manages to fit in a magnificent bank of innovative features, including:

Specification highlights

- 2 cabin / 2 heads
- Choice of mid or forward master cabin
- Full standing headroom throughout cabins
- Single piece windscreen
- Hardtop with electric sliding canvas roof
- Large forward and aft sunbeds
- Garage for Williams 280 MiniJet

Optional equipment highlights

- Seakeeper® 3 gyroscopic stabiliser
- Sofa to mid cabin
- Blue or white exterior mood lighting
- Volvo Dynamic Positioning System
- High capacity air conditioning





AN OPEN INVITATION
TO EXPERIENCE PURE JOY







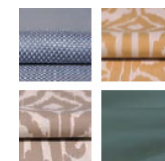




BEAUTIFULLY FINISHED INSIDE AND OUT

In the spirit of building the perfect yacht at every possible level, we have also carefully created four different interior design schemes for you to choose from:

Amalfi



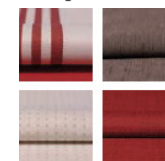
Inspired by Liguria's local architecture, this scheme exudes the sunny warmth synonymous with fragrant Italian lemon trees and the umbrella-lined shores of the Amalfi Coast.

Capri



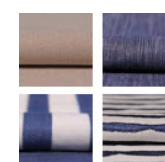
Understated, earthy colours, effortlessly combined with rich natural textures. All the hallmarks of an interior design collection that is as gentle as the Mediterranean breeze.

Hamptons



Evoking elegant vintage design cues, whilst offering a bold and contemporary interpretation of the luxury that was once the preserve of America's East Coast.

St. Tropez



An ode to the sea where all manner of deep, oceanic blues tastefully swirl with muted greys, delicate creams and classic nautical motifs.



CAREFULLY CONSIDERED PROPORTIONS

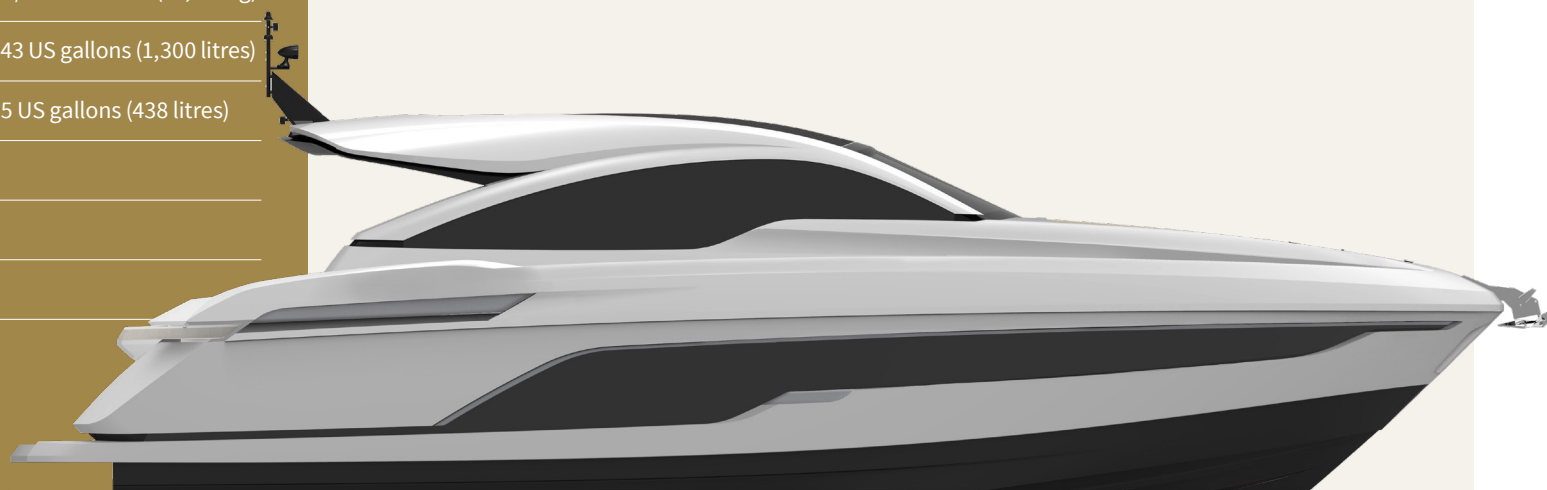
Principal Dimensions

| | |
|----------------------------------|---|
| Length overall (exc. pulpit) | 45'7" (13.9m) |
| Beam (inc. gunwale) | 14'2" (4.32m) |
| Draught | 3'10" (1.17m) unloaded |
| Height above waterline | 18'2" (5.55m) |
| Transport height | 16'0" (4.87m) |
| Dry weight | 12.30 imp. tons/13.77 US tons (12,500kg) |
| Fuel capacity | 286 gallons/343 US gallons (1,300 litres) |
| Water capacity (inc. calorifier) | 96 gallons/115 US gallons (438 litres) |
| Sleeps | 4 – 5 |
| Classification | Category B |
| Capacity | 12 persons |

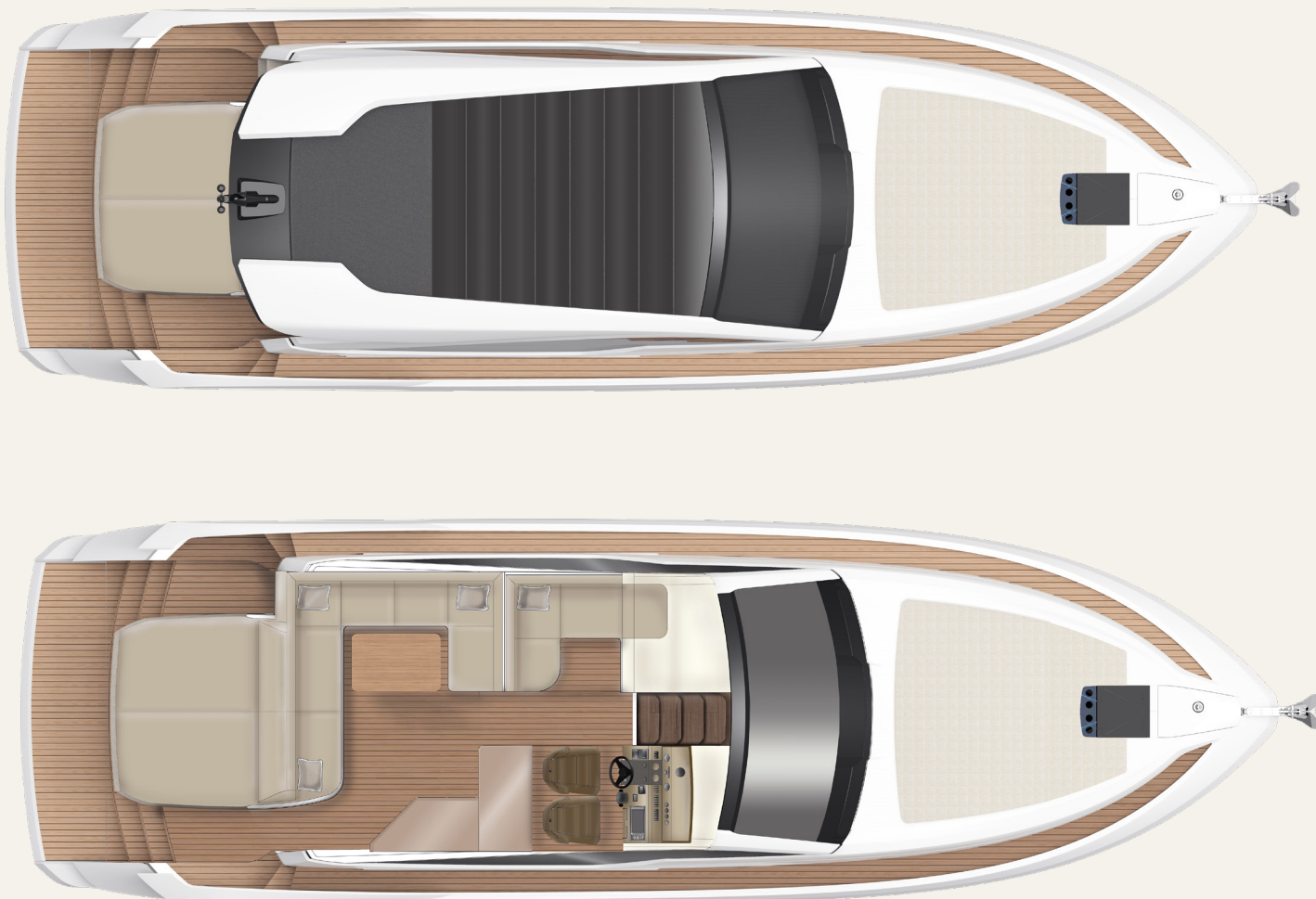
Engines and Performance

2 x Volvo Penta, IPS600 D6-440, diesel (880hp): 32 knots

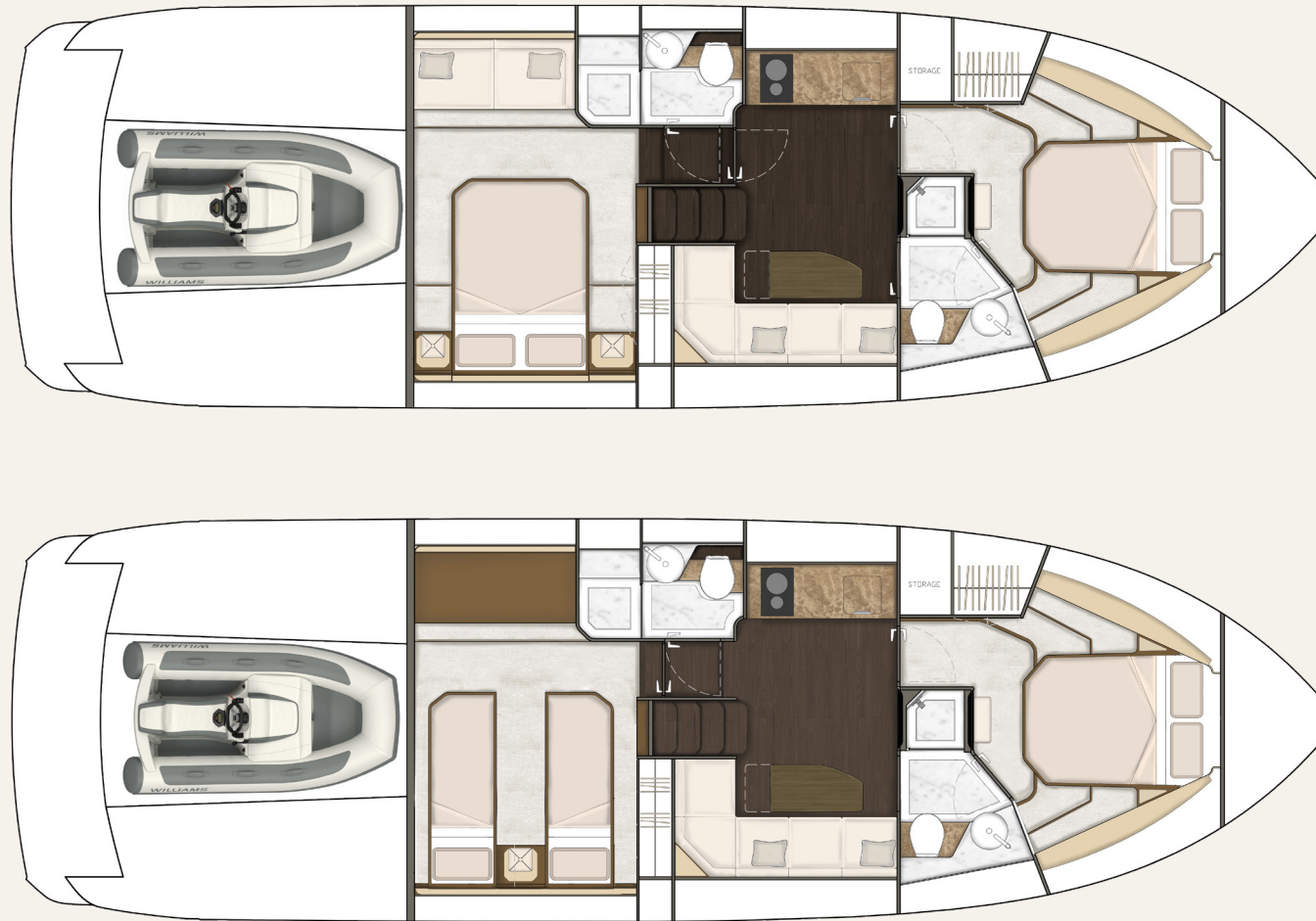
2 x Volvo Penta, IPS650 D6-480, diesel (960hp): 33 knots (est. max.)



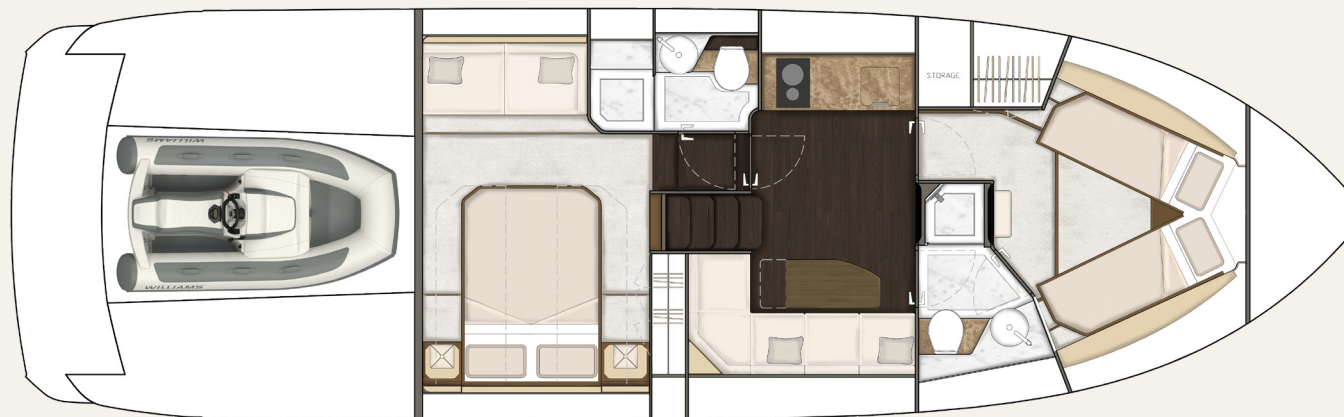
TARGA 45 OPEN MAIN DECK



TARGA 45 OPEN LOWER DECK



TARGA 45 OPEN LOWER DECK





JOIN THE FAIRLINE FAMILY.

Visit **fairline.com** and start to
see a world of possibilities.

Come to us for adventure. Come to us for design
and heritage. And come to us for forward thinking.
But most of all, come and experience our
acclaimed Dealership network.

Each Appointed Fairline Dealer is a professional, thriving business,
working with your best interests at heart and using their intimate
local knowledge to your advantage. Yes, they will provide you with
a trusted service, but also friendship and care beyond the call of duty.



Fairline Argentina
Fairline Australia
Fairline Baltic
Fairline Benelux and West Germany
Fairline Beirut
Fairline Brazil
Fairline Cala d'Or
Fairline Channel Islands
Fairline Chesapeake
Fairline Colombia
Fairline Côte d'Azur

Fairline Croatia
Fairline Cyprus
Fairline Denia
Fairline Denmark
Fairline Eastbourne
Fairline Eastern Canada
Fairline Egypt
Fairline Finland
Fairline Florida
Fairline Great Lakes
Fairline Greece

Fairline Hong Kong
Fairline Ibiza
Fairline India
Fairline Israel
Fairline Italy
Fairline Korea
Fairline London
Fairline Malta
Fairline Menorca
Fairline Mexico
Fairline Middle East

Fairline Monaco
Fairline New York
Fairline New Zealand
Fairline Norway
Fairline Philippines
Fairline Poland
Fairline Poole
Fairline Portugal
Fairline Russia
Fairline Singapore
Fairline Southampton

Fairline South China
Fairline South Germany and Austria
Fairline South Mallorca
Fairline Sweden
Fairline Thailand
Fairline Turkey
Fairline Ukraine

Fairline Yachts constantly seek ways of improving specifications, design and production. Therefore, alterations take place on a continuous basis. Whilst every effort is made to produce up-to-date literature, the descriptions, specifications, illustrations and photographs in this brochure should not be regarded as a definitive guide to current specifications, nor does it constitute an offer for the sale of any particular boat. Performance estimates are given in good faith, but are in no way guaranteed for any particular boat. Dirt on the bottom of the boat, damage to propellers, engine tuning, external water and air temperatures and the weight of crew, fuel and water carried can all adversely affect performance. For these and other reasons we can give no performance guarantees.