



TARGA 48 GT

We're going places. Join us.





THE WORLD IS WAITING IT'S YOUR MOVE

The seas are beckoning, the wine is chilled and everyone's on board. The exceptional engineering of the Targa 48 GT means you can go further, explore more and extend your stay with ease.

Combining the luxury of a spacious, sociable upper deck with a well-appointed helm station and twin pilot seats, the Targa 48 GT enables you to share the thrill of discovery in comfort. Add to that the new signature Alberto Mancini-designed windows, which sweep across its hull, and you have a craft that exudes as much style as it does performance and power.

Then, let's not forget all the technologies come as standard. Such as the electric, hardtop roof, coupled with panelled glazing. With one elegant sweep, the Targa 48 GT lets sunlight flood in, whilst its powerful IPS engines deliver an agile performance that responds to the thrill of the journey ahead – wherever it may take you.

SHARE THE EXPERIENCE COMFORTABLY. SOCIABLY.

The Targa 48 GT has perfectly thought-through features, such as U-shaped seating in the cockpit, with the option to specify a teak table that converts to a sunpad. Perfect for complete open-to-the-skies living and stylish entertaining, day or night.

Specification highlights:

- Electric retractable glazed roof with one-touch operation and pneumatic seal
- Enclosed main deck saloon
- Large mid-master cabin with en suite and separate shower compartment
- Companion seating opposite helm
- Opening windows to helm and saloon
- Full-height fridge/freezer

Optional equipment highlights:

- Convertible V-berth forward guest cabin
- Single crew cabin
- Third cabin in lieu of lower saloon
- Sofa, convertible to third berth to master cabin
- Submersible bathing platform with 400kg lifting capacity
- Seakeeper® 6 gyroscopic stabiliser









A HOTSPOT FOR ENTERTAINING
DAY AND NIGHT

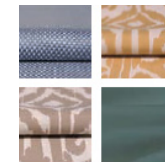




WE HAVE DESIGNS ON THE PERFECT RESTING PLACE

In the spirit of building the perfect yacht at every possible level, we have also carefully created four different interior design schemes for you to choose from:

Amalfi



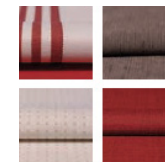
Inspired by Liguria's local architecture, this scheme exudes the sunny warmth synonymous with fragrant Italian lemon trees and the umbrella-lined shores of the Amalfi Coast.

Capri



Understated, earthy colours, effortlessly combined with rich natural textures. All the hallmarks of an interior design collection that is as gentle as the Mediterranean breeze.

Hamptons



Evoking elegant vintage design cues, whilst offering a bold and contemporary interpretation of the luxury that was once the preserve of America's East Coast.

St. Tropez



An ode to the sea where all manner of deep, oceanic blues tastefully swirl with muted greys, delicate creams and classic nautical motifs.



MORE SPACE MEANS MORE FUN

Principal Dimensions

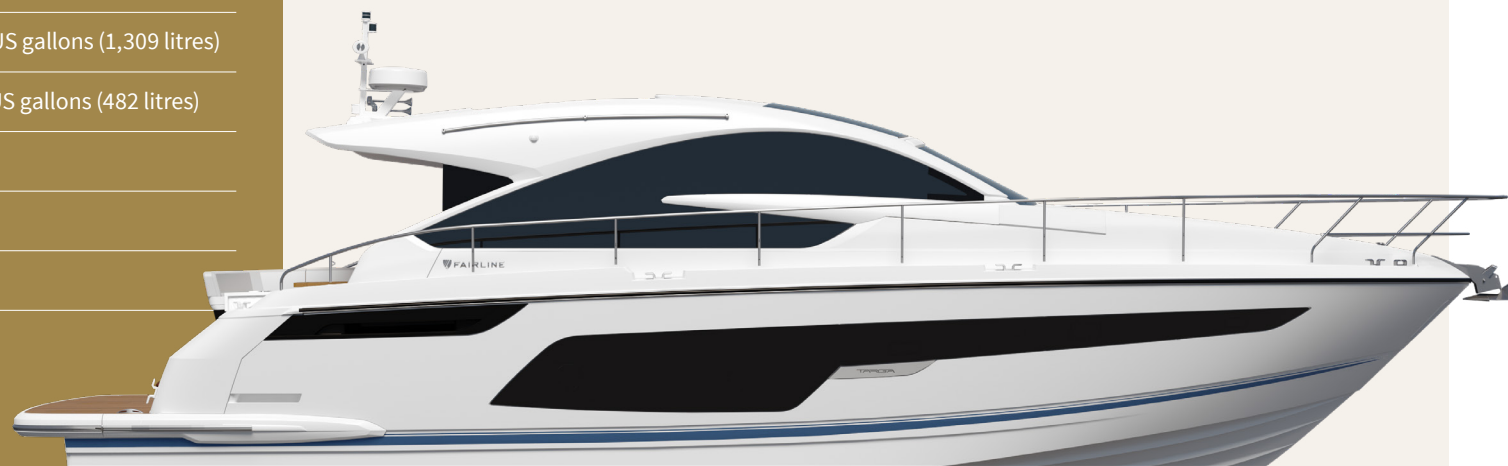
Length overall (exc. pulpit)	50'8" (15.44m)
Beam (inc. gunwale)	14'2" (4.32m)
Draught	3'10" (1.17m) unloaded
Height above waterline	15'1" (4.6m)
Transport height	15'10" (4.83m)
Dry weight (approx.)	13.28 imp. tons/14.88 US tons (13,500kg)
Fuel capacity	288 gallons/346 US gallons (1,309 litres)
Water capacity (inc. calorifier)	106 gallons/127 US gallons (482 litres)
Sleeps	4 – 7
Classification	Category B
Capacity	16 persons

Engines and Performance

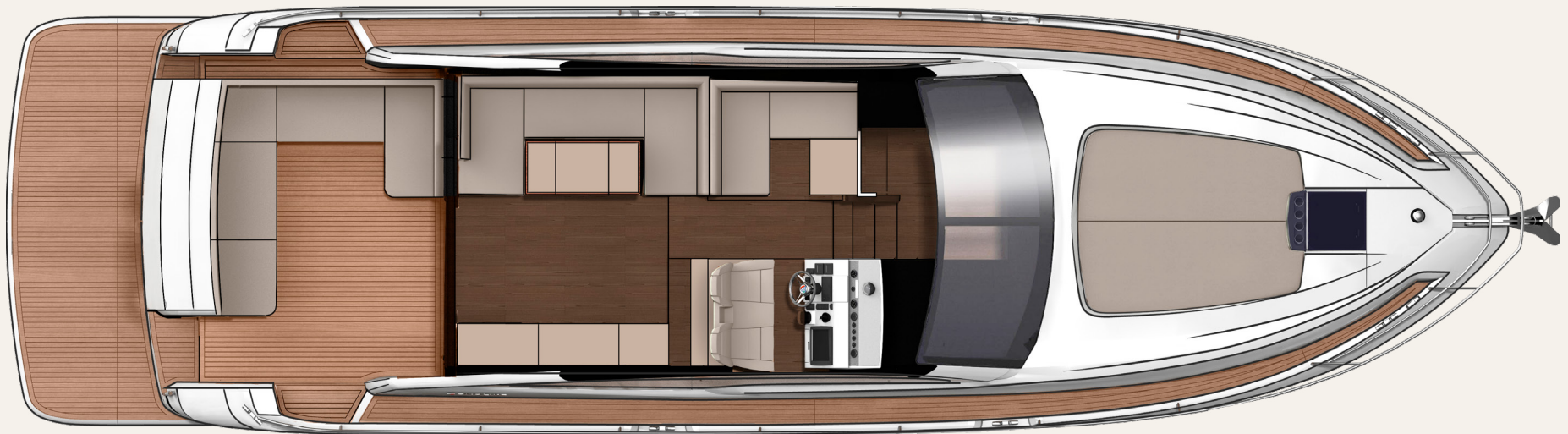
2 x Volvo Penta IPS600 D6-440, diesel (880hp): 30 knots

2 x Volvo Penta IPS650 D6-480, diesel (960hp): 31 knots (est. max)

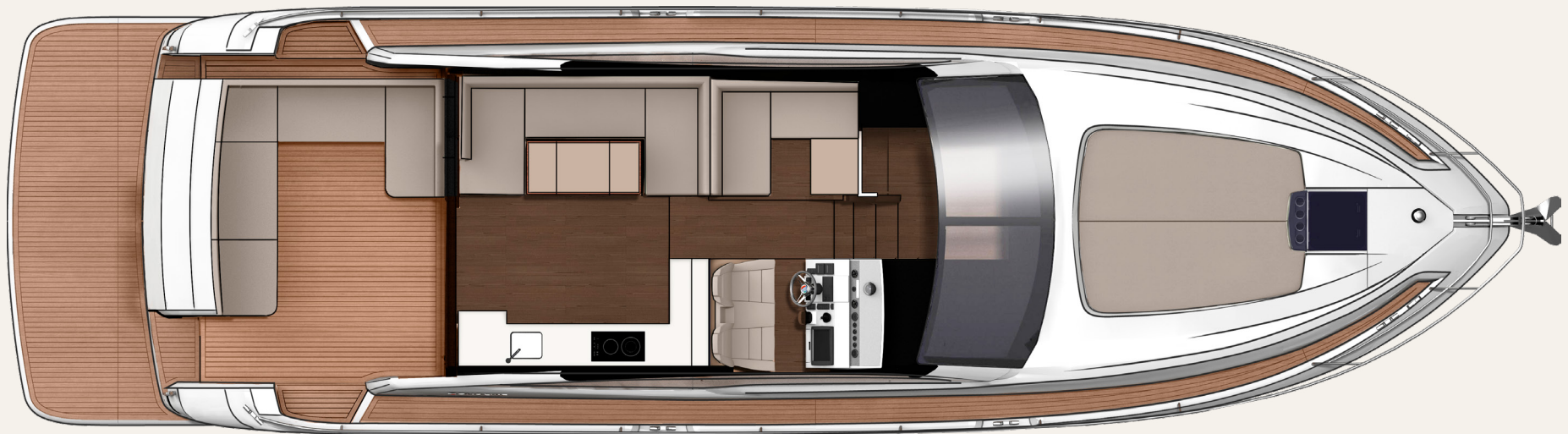
2 x Volvo Penta IPS700 D8-550, diesel (1100hp): 32 knots



TARGA 48 GT MAIN DECK

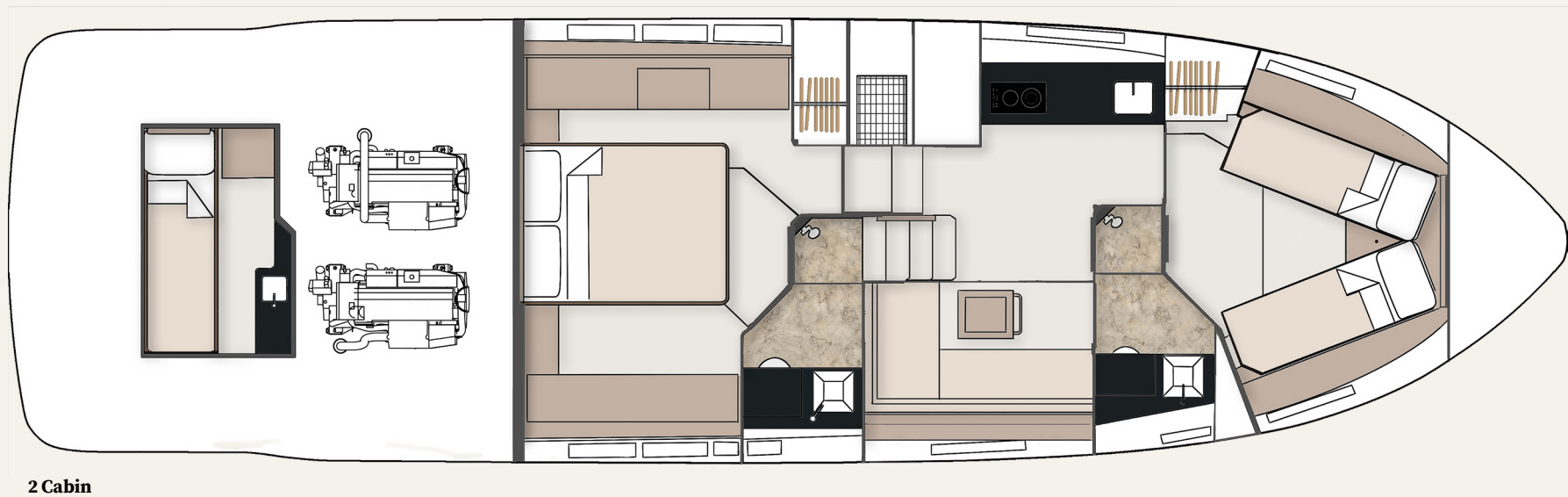


TARGA 48 GT MAIN DECK



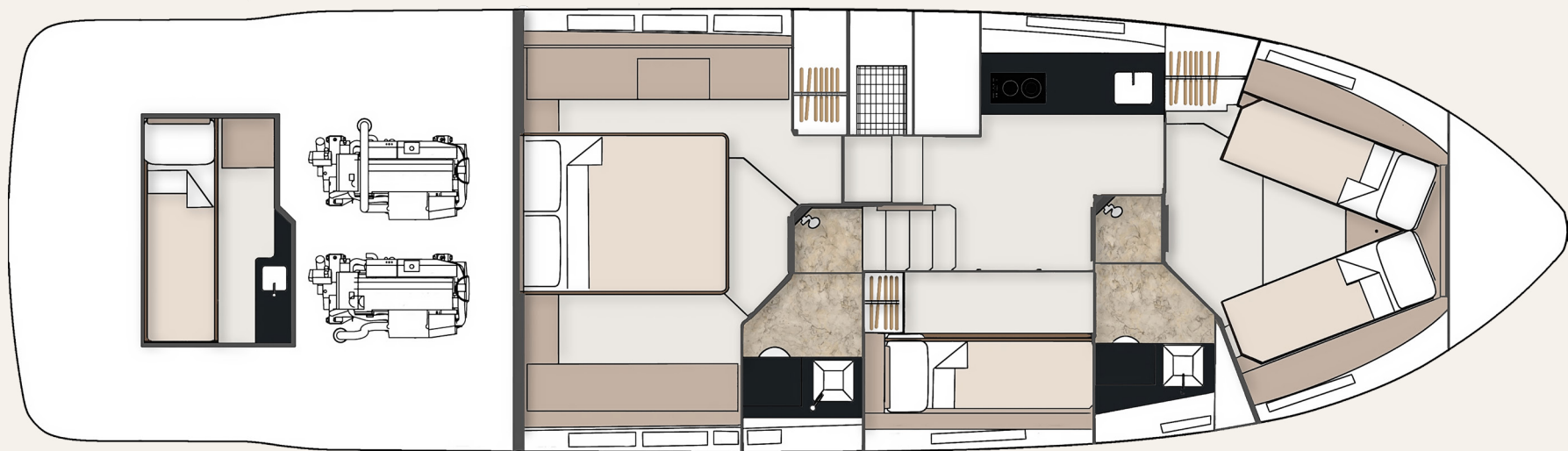
Galley up (option)

TARGA 48 GT LOWER DECK



2 Cabin

TARGA 48 GT LOWER DECK



3 Cabin



JOIN THE FAIRLINE FAMILY.

Visit **fairline.com** and start to
see a world of possibilities.

Come to us for adventure. Come to us for design
and heritage. And come to us for forward thinking.
But most of all, come and experience our
acclaimed Dealership network.

Each Appointed Fairline Dealer is a professional, thriving business,
working with your best interests at heart and using their intimate
local knowledge to your advantage. Yes, they will provide you with
a trusted service, but also friendship and care beyond the call of duty.



Fairline Argentina
Fairline Australia
Fairline Baltic
Fairline Benelux and West Germany
Fairline Beirut
Fairline Brazil
Fairline Cala d'Or
Fairline Channel Islands
Fairline Chesapeake
Fairline Colombia
Fairline Côte d'Azur

Fairline Croatia
Fairline Cyprus
Fairline Denia
Fairline Denmark
Fairline Eastbourne
Fairline Eastern Canada
Fairline Egypt
Fairline Finland
Fairline Florida
Fairline Great Lakes
Fairline Greece

Fairline Hong Kong
Fairline Ibiza
Fairline India
Fairline Israel
Fairline Italy
Fairline Korea
Fairline London
Fairline Malta
Fairline Menorca
Fairline Mexico
Fairline Middle East

Fairline Monaco
Fairline New York
Fairline New Zealand
Fairline Norway
Fairline Philippines
Fairline Poland
Fairline Poole
Fairline Portugal
Fairline Russia
Fairline Singapore
Fairline Southampton

Fairline South China
Fairline South Germany and Austria
Fairline South Mallorca
Fairline Sweden
Fairline Thailand
Fairline Turkey
Fairline Ukraine

Fairline Yachts constantly seek ways of improving specifications, design and production. Therefore, alterations take place on a continuous basis. Whilst every effort is made to produce up-to-date literature, the descriptions, specifications, illustrations and photographs in this brochure should not be regarded as a definitive guide to current specifications, nor does it constitute an offer for the sale of any particular boat. Performance estimates are given in good faith, but are in no way guaranteed for any particular boat. Dirt on the bottom of the boat, damage to propellers, engine tuning, external water and air temperatures and the weight of crew, fuel and water carried can all adversely affect performance. For these and other reasons we can give no performance guarantees.