



# TARGA 48 OPEN

We're going places. Join us.





## OPEN YOURSELVES UP TO A WORLD OF ADVENTURE

The Targa 48 OPEN offers the space and luxury to enjoy sun-drenched days and overnight stays in style (especially now, with the signature, Alberto Mancini-designed windows sweeping across its hull).

Entertaining on the main deck? Activate the retractable canvas roof and sunlight floods in on you and your guests. Want to relax? Stretch out on the large sunbeds, dive off the submersible bathing platform or take a break below deck – there's plenty of room.

With its exceptional manoeuvrability, the Targa 48 OPEN combines the performance and handling of a smaller vessel. With U-shaped seating in the large cockpit and companion seating opposite the helm, there's plenty of room for all your guests. Let the views through the large panoramic windows speed by, as the Targa 48 OPEN creates those memories you'll all remember for years to come.



# SHARE THE EXHILARATION

---

Inside and out, the Targa 48 OPEN maximizes opportunity for free-flowing entertainment. Enjoy sociable days, comfortable nights and responsive handling at your fingertips.

#### Specification highlights:

- Powered sliding canvas roof
- Garage for Williams 285 TurboJet
- Large mid-master cabin and en suite with separate shower compartment
- Companion seating opposite helm
- Full-height fridge/freezer
- Large forward and aft sunbeds

#### Optional equipment highlights:

- High capacity air conditioning
- Convertible V-berth forward guest cabin
- Third cabin in lieu of saloon
- Sofa, convertible to third berth to master cabin
- Folding teak table in the spacious cockpit seating area
- Submersible bathing platform with 400kg lifting capacity
- Seakeeper® 6 gyroscopic stabiliser







SEE YOUR NEXT DESTINATION













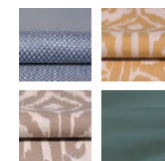


# THE YACHT WITH ENDLESS PERSONALITY INCLUDING YOURS



In the spirit of building the perfect yacht at every possible level, we have also carefully created four different interior design schemes for you to choose from:

## Amalfi



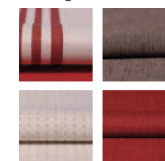
Inspired by Liguria's local architecture, this scheme exudes the sunny warmth synonymous with fragrant Italian lemon trees and the umbrella-lined shores of the Amalfi Coast.

## Capri



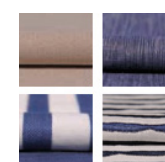
Understated, earthy colours, effortlessly combined with rich natural textures. All the hallmarks of an interior design collection that is as gentle as the Mediterranean breeze.

## Hamptons



Evoking elegant vintage design cues, whilst offering a bold and contemporary interpretation of the luxury that was once the preserve of America's East Coast.

## St. Tropez



An ode to the sea where all manner of deep, oceanic blues tastefully swirl with muted greys, delicate creams and classic nautical motifs.



# ELEGANT LOW-PROFILE APPEAL

## Principal Dimensions

<b>Length overall (exc. pulpit) fixed platform</b>	50'8" (15.44m)
<b>Beam (inc. gunwale)</b>	14'2" (4.32m)
<b>Draught</b>	3'10" (1.17m) unloaded
<b>Height above waterline</b>	15'1" (4.6m)
<b>Transport height</b>	15'10" (4.83m)
<b>Dry weight (approx.)</b>	12.79 imp. tons/14.33 US tons (13,000kg)
<b>Fuel capacity</b>	288 gallons/346 US gallons (1,309 litres)
<b>Water capacity (inc. calorifier)</b>	106 gallons/127 US gallons (482 litres)
<b>Sleeps</b>	4 – 7
<b>Classification</b>	Category B
<b>Capacity</b>	16 persons

## Engines and Performance

2 x Volvo Penta IPS600 D6-440, diesel (880hp): 32 knots

2 x Volvo Penta IPS650 D6-480, diesel (960hp): 33 knots (est. max)

2 x Volvo Penta IPS700 D8-550, diesel (1100hp): 34 knots



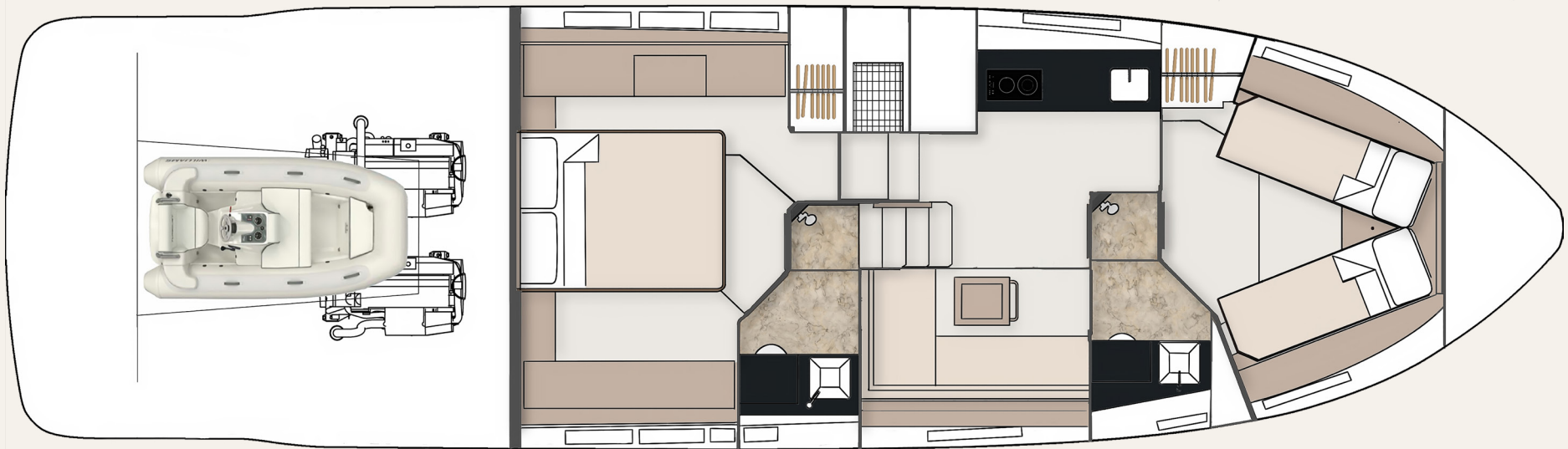


## TARGA 48 OPEN MAIN DECK





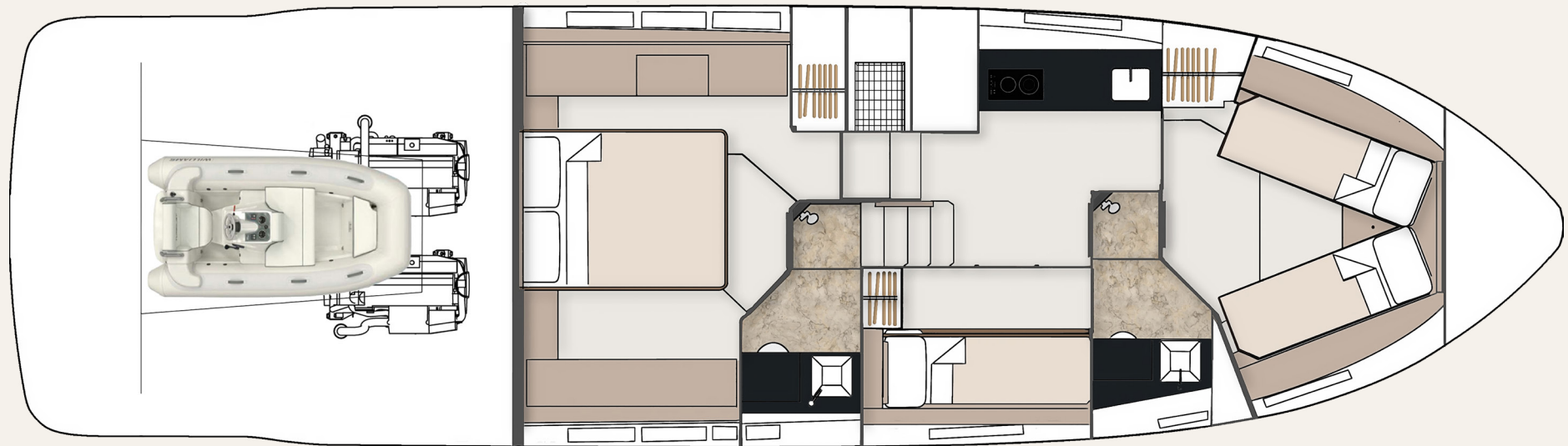
## TARGA 48 OPEN LOWER DECK



**2 Cabin**



## TARGA 48 OPEN LOWER DECK



**3 Cabin**





## JOIN THE FAIRLINE FAMILY.

Visit **fairline.com** and start to see a world of possibilities.

Come to us for adventure. Come to us for design and heritage. And come to us for forward thinking. But most of all, come and experience our acclaimed Dealership network.

Each Appointed Fairline Dealer is a professional, thriving business, working with your best interests at heart and using their intimate local knowledge to your advantage. Yes, they will provide you with a trusted service, but also friendship and care beyond the call of duty.



Fairline Argentina  
Fairline Australia  
Fairline Baltic  
Fairline Benelux and West Germany  
Fairline Beirut  
Fairline Brazil  
Fairline Cala d'Or  
Fairline Channel Islands  
Fairline Chesapeake  
Fairline Colombia  
Fairline Côte d'Azur

Fairline Croatia  
Fairline Cyprus  
Fairline Denia  
Fairline Denmark  
Fairline Eastbourne  
Fairline Eastern Canada  
Fairline Egypt  
Fairline Finland  
Fairline Florida  
Fairline Great Lakes  
Fairline Greece

Fairline Hong Kong  
Fairline Ibiza  
Fairline India  
Fairline Israel  
Fairline Italy  
Fairline Korea  
Fairline London  
Fairline Malta  
Fairline Menorca  
Fairline Mexico  
Fairline Middle East

Fairline Monaco  
Fairline New York  
Fairline New Zealand  
Fairline Norway  
Fairline Philippines  
Fairline Poland  
Fairline Poole  
Fairline Portugal  
Fairline Russia  
Fairline Singapore  
Fairline Southampton

Fairline South China  
Fairline South Germany and Austria  
Fairline South Mallorca  
Fairline Sweden  
Fairline Thailand  
Fairline Turkey  
Fairline Ukraine

Fairline Yachts constantly seek ways of improving specifications, design and production. Therefore, alterations take place on a continuous basis. Whilst every effort is made to produce up-to-date literature, the descriptions, specifications, illustrations and photographs in this brochure should not be regarded as a definitive guide to current specifications, nor does it constitute an offer for the sale of any particular boat. Performance estimates are given in good faith, but are in no way guaranteed for any particular boat. Dirt on the bottom of the boat, damage to propellers, engine tuning, external water and air temperatures and the weight of crew, fuel and water carried can all adversely affect performance. For these and other reasons we can give no performance guarantees.