



TARGA 65 GT

We're going places. Join us.





A WONDERFUL EXPRESSION OF DESIGN LEGACY WITH VISION.

At first glance, it's difficult to ignore superyacht designer Alberto Mancini's signature design language, which is in every curve of the Targa 65 GT's sleek profile. But when you begin to recognise it, you'll see why this motor yacht has such a striking appeal.

The foredeck is the perfect place to relax in privacy, while the sheer amount of space on the inside allows you to socialise on a bigger scale, especially in the extended saloon. The Targa 65 GT has been configured to maximise life on board, and whether you're alone or enjoying the company of friends, it is a stunning place to be.

CRAFTED WITH ROOM FOR MORE

Although the flexible interiors offer plenty of space, the stunning design of the Targa 65 GT means there is more than enough room to fit in all of its innovative features.

Specification highlights:

- Designed by Alberto Mancini
- Naval architecture by Vripack
- 3 or 4 cabin/ 3 or 4 heads layouts
- Single piece windscreen
- Powered glazed sunroof
- Powered sunshade over cockpit
- f-Drive multifunction glass bridge
- Large main deck galley
- Fully integrated audio/visual systems throughout
- Foredeck seating & sunbeds
- Optional Sleipner® hydraulic vector fin stabilisers or Seakeeper® 9 or 16 gyroscopic stabiliser
- Twin crew cabin



















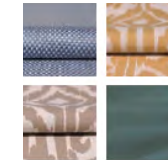


IT'S THE MOST
WONDERFUL PLACE TO BE

LUXURY BY DEFINITION MEANS SPOILT FOR CHOICE

In the spirit of building the perfect yacht at every possible level, we have also carefully created four different interior design schemes for you to choose from:

Amalfi



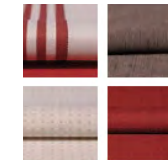
Inspired by Liguria's local architecture, this scheme exudes the sunny warmth synonymous with fragrant Italian lemon trees and the umbrella-lined shores of the Amalfi Coast.

Capri



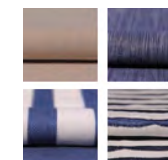
Understated, earthy colours, effortlessly combined with rich natural textures. All the hallmarks of an interior design collection that is as gentle as the Mediterranean breeze.

Hamptons



Evoking elegant vintage design cues, whilst offering a bold and contemporary interpretation of the luxury that was once the preserve of America's East Coast.

St. Tropez



An ode to the sea where all manner of deep, oceanic blues tastefully swirl with muted greys, delicate creams and classic nautical motifs.



CLEANER SLEEKER PROFILE

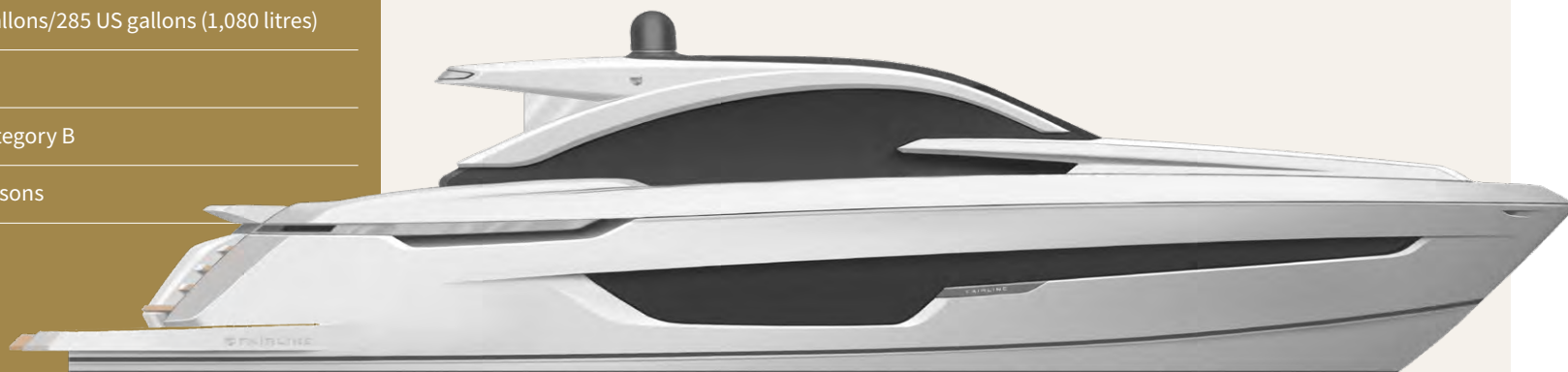
Principal Dimensions

Length overall (exc. pulpit)	65'2" (19.88m)
Beam (inc. gunwale)	17'2" (5.23m)
Draught	4'8" (1.47m)
Height above waterline	17'0" (5.20m)
Transport height	16'4" (5.0m)
Dry weight	33.56 imp. tons/37.47 US tons (34,000kg)
Fuel capacity	1,029 gallons/1,236 US gallons (4,680 litres)
Water capacity (inc. calorifier)	237 gallons/285 US gallons (1,080 litres)
Sleeps	6 – 10
Classification	CE Category B
Capacity	16 persons

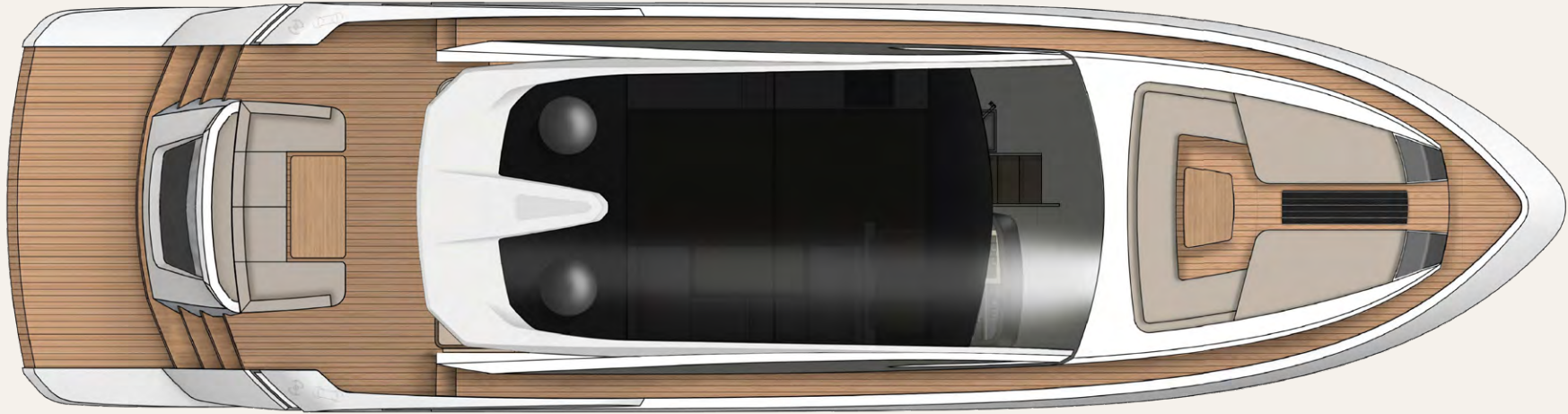
Engines and Performance

2 x Caterpillar C18 shaft drive, diesel (2300hp): 31 knots

2 x MAN V8 1200 shaft drive, diesel (2400hp): 31 knots



TARGA 65 GT EXTERIOR DECK



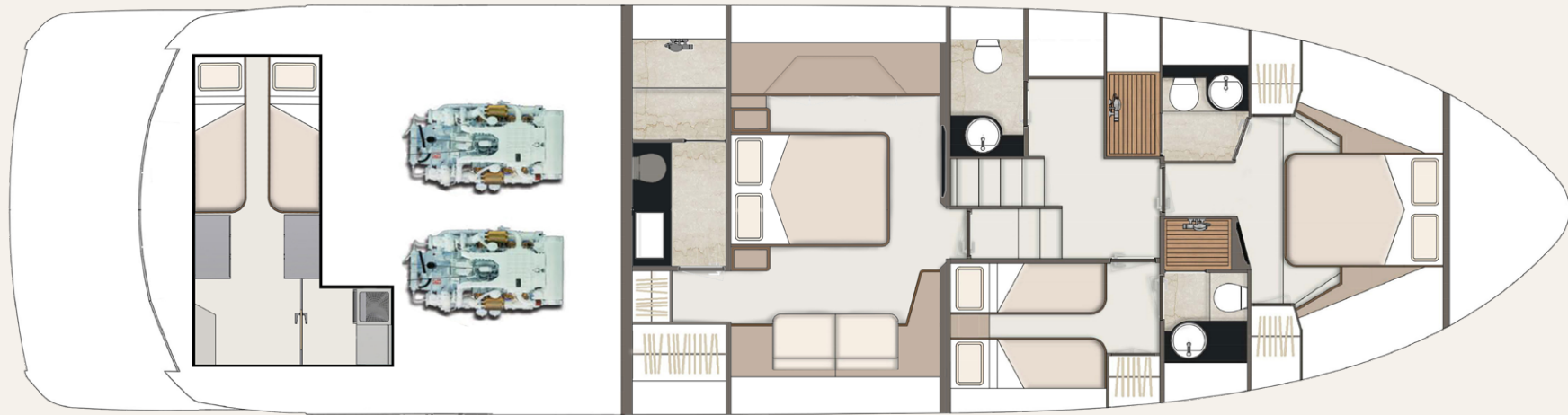
TARGA 65 GT MAIN DECK



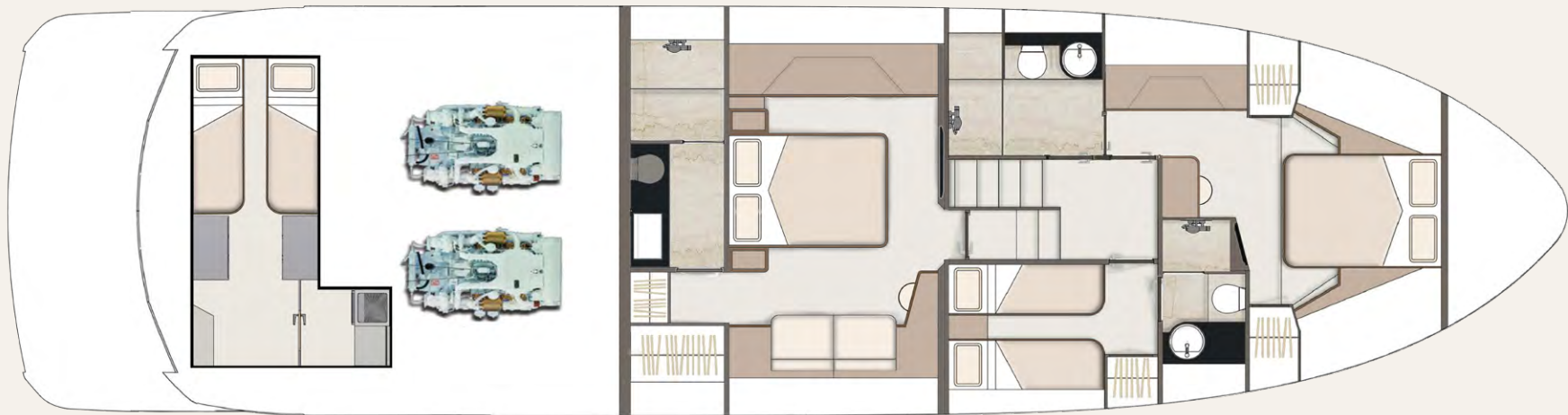
TARGA 65 GT MAIN DECK



TARGA 65 GT LOWER DECK

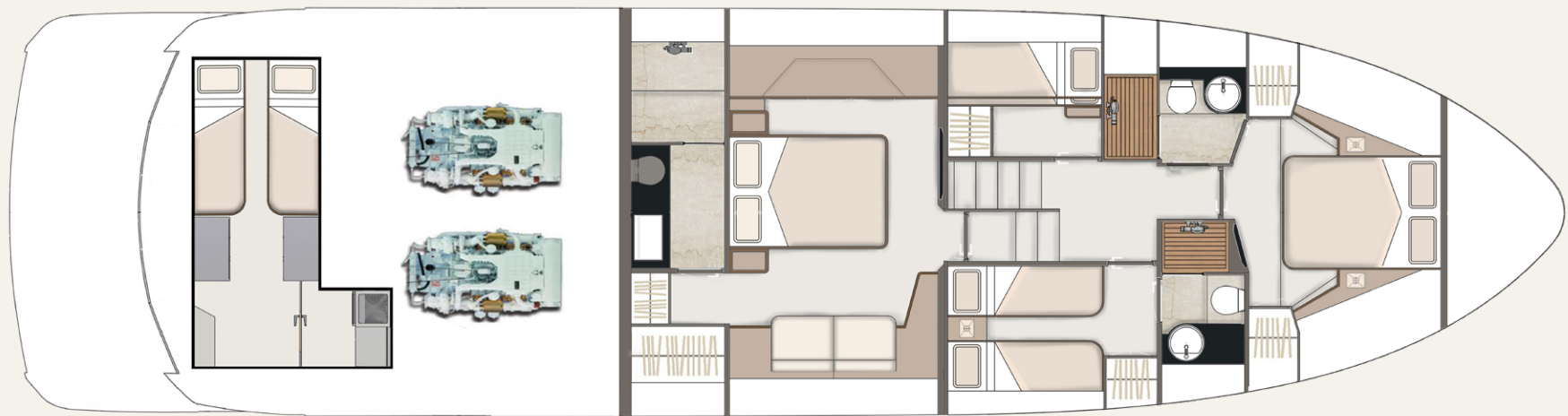


3 Cabin



3 Cabin (Extended Forward VIP)

TARGA 65 GT LOWER DECK



4 Cabin



JOIN THE FAIRLINE FAMILY.

Visit **fairline.com** and start to see a world of possibilities.

Come to us for adventure. Come to us for design and heritage. And come to us for forward thinking. But most of all, come and experience our acclaimed Dealership network.

Each Appointed Fairline Dealer is a professional, thriving business, working with your best interests at heart and using their intimate local knowledge to your advantage. Yes, they will provide you with a trusted service, but also friendship and care beyond the call of duty.



Fairline Argentina
Fairline Australia
Fairline Baltic
Fairline Benelux & West Germany
Fairline Beirut
Fairline Brazil
Fairline Channel Islands
Fairline Chesapeake
Fairline Colombia
Fairline Côte d'Azur
Fairline Croatia

Fairline Cyprus
Fairline Denia
Fairline Eastbourne
Fairline Eastern Canada
Fairline Egypt
Fairline Empuriabrava
Fairline Finland
Fairline Florida
Fairline Great Lakes
Fairline Greece
Fairline Hong Kong

Fairline Ibiza
Fairline India
Fairline Israel
Fairline Italy
Fairline Korea
Fairline London
Fairline Maldives
Fairline Mallorca
Fairline Malta
Fairline Menorca
Fairline Mexico

Fairline Middle East
Fairline Monaco
Fairline New York
Fairline New Zealand
Fairline Northwest
Fairline Norway
Fairline Philippines
Fairline Poland
Fairline Poole
Fairline Portugal
Fairline Russia

Fairline Singapore
Fairline South China
Fairline South Germany & Austria
Fairline Southampton
Fairline Southern Spain
Fairline Sweden
Fairline Switzerland
Fairline Thailand
Fairline Turkey
Fairline Ukraine

© FAIRLINE YACHTS LTD 2020. ALL RIGHTS RESERVED. FAIRLINE AND TARGA ARE REGISTERED TRADEMARKS OF FAIRLINE YACHTS LTD. TOGETHER WITH ALL TEXT AND IMAGES CONTAINED IN THIS PUBLISHED MATERIAL, THEY ARE PROTECTED BY COPYRIGHT AND MAY NOT BE PRODUCED IN ANY FORM WITHOUT THE EXPRESS WRITTEN PERMISSION OF THE COPYRIGHT OWNERS. Published by Fairline Yachts Ltd, Oundle, PE8 4HN, England. Fairline Yachts constantly seek ways of improving specifications, design and production. Therefore, alterations take place on a continuous basis. Whilst every effort is made to produce up-to-date literature, the descriptions, specifications, illustrations and photographs in this brochure should not be regarded as a definitive guide to current specifications, nor does it constitute an offer for the sale of any particular boat. Performance estimates are given in good faith, but are in no way guaranteed for any particular boat. Dirt on the bottom of the boat, damage to propellers, engine tuning, external water and air temperatures and the weight of crew, fuel and water carried can all adversely affect performance. For these and other reasons we can give no performance guarantees.